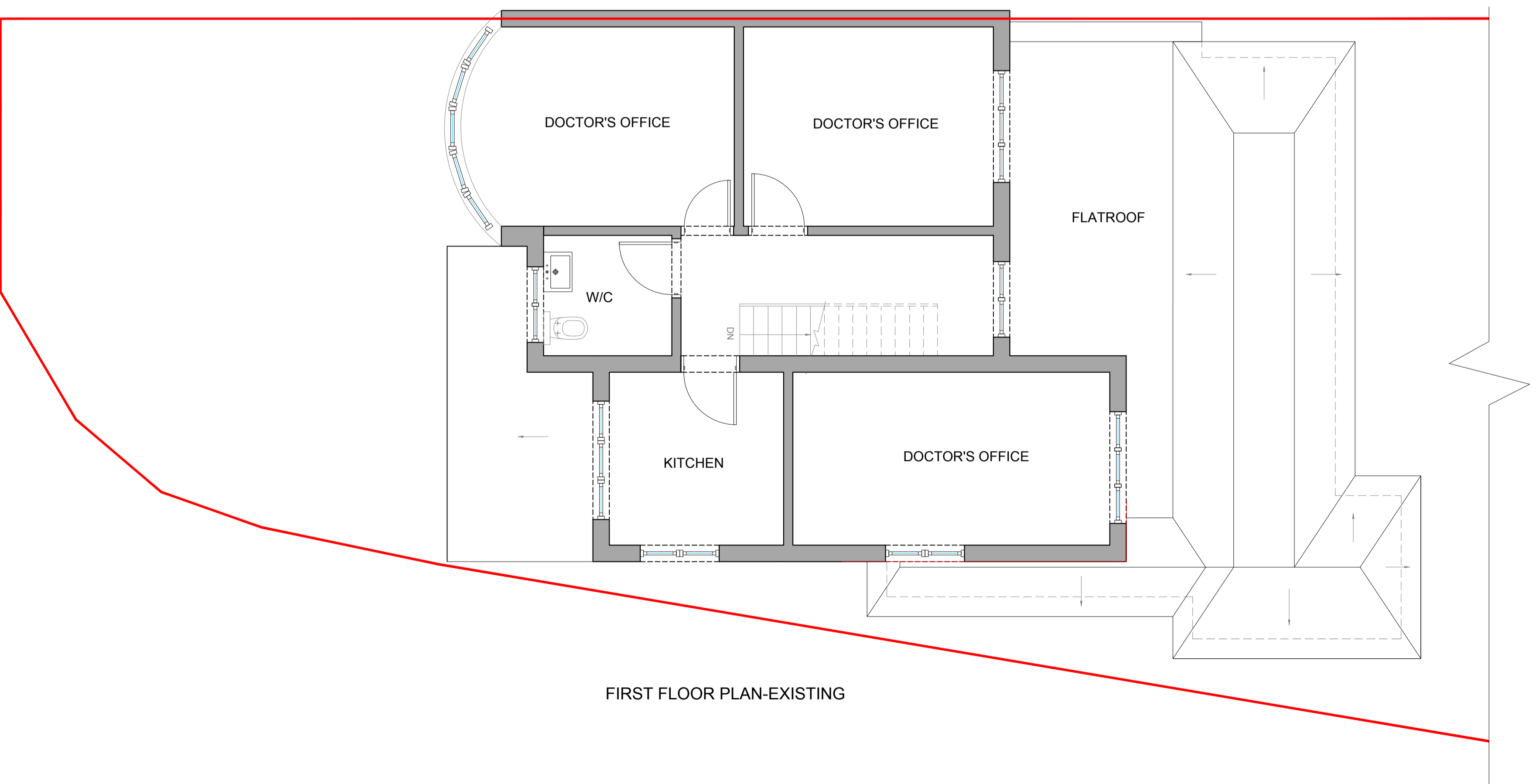


GROUND FLOOR PLAN-EXISTING



FIRST FLOOR PLAN-EXISTING

GENERAL NOTES

1. Work to be carried out with proper materials and in a manner that will ensure compliance with CDM regulations. In particular the contractor is to allow for imposed personnel, where both, work at high level involving existing structural materials, see requirements etc.
2. Materials to comply with current requirements of BS5839 part 3.
3. Materials to comply with current requirements of BS5839 part 3.
4. All materials to comply with the manufacturer's instructions, and used in accordance with appropriate approval certificates. Include listing of approvals for current operations & modifications comply with Part A.
5. Check all dimensions on site. Do not assume from drawings.
6. All materials to comply with the manufacturer's instructions, and used in accordance with appropriate approval certificates. Include listing of approvals for current operations & modifications comply with Part A.
7. Provide shoring at mid spans of joists spanning 2.5 - 4.5 m and at third span for joists over 4.5 m.
8. All areas which are marked by the works to be carried out, or in accordance with local authority requirements.

9. Electrical work to be designed & carried out by a competent registered person in accordance with current NICEIC recommendations & BS 7671. Include in quotation & listing and providing completion & inspection certificate on completion. Ensure that the earthing system complies with BS 7671 and BS 5893. Also see BS 7671:2018. Also see BS 7671:2018. Also see BS 7671:2018.
10. Work to comply with current requirements of BS5839 part 3.
11. Minimum spacing of cavity ties for 100mm cavity: 100mm horizontally, 400mm vertically, 200mm at all unobstructed joints with a 200mm of overlap.
12. Flat structure and finish to be in accordance with BS5839 part 3. Also see BS 5893:2018. Also see BS 5893:2018. Also see BS 5893:2018.
13. Flat base to be in accordance with BS5839 part 3. Also see BS 5893:2018. Also see BS 5893:2018. Also see BS 5893:2018.
14. Brick work and block work to be properly bonded and constructed of clay brick or BS6081:1976 concrete blocks to meet BS 5623 part 1:2011.
15. Mortar to be in accordance with BS5623 part 1. Also see BS 5623:2011. Also see BS 5623:2011. Also see BS 5623:2011.
16. Bearing strength for bricks to be 100 N/mm² minimum. Include reports & approvals on a 2m x 2m x 2m test area in the local masonry.

17. Foundations to be situated centrally under walls, minimum thickness 100mm, consisting of concrete to BS5113:1976 aggregate to BS 882:1983. Also see BS 5893:2018. Also see BS 5893:2018. Also see BS 5893:2018.
18. Foundations to be in accordance with BS5839 part 3. Also see BS 5893:2018. Also see BS 5893:2018. Also see BS 5893:2018.
19. Foundations to be in accordance with BS5839 part 3. Also see BS 5893:2018. Also see BS 5893:2018. Also see BS 5893:2018.
20. Foundations to be in accordance with BS5839 part 3. Also see BS 5893:2018. Also see BS 5893:2018. Also see BS 5893:2018.
21. Foundations to be in accordance with BS5839 part 3. Also see BS 5893:2018. Also see BS 5893:2018. Also see BS 5893:2018.
22. Foundations to be in accordance with BS5839 part 3. Also see BS 5893:2018. Also see BS 5893:2018. Also see BS 5893:2018.
23. Foundations to be in accordance with BS5839 part 3. Also see BS 5893:2018. Also see BS 5893:2018. Also see BS 5893:2018.
24. Foundations to be in accordance with BS5839 part 3. Also see BS 5893:2018. Also see BS 5893:2018. Also see BS 5893:2018.
25. Foundations to be in accordance with BS5839 part 3. Also see BS 5893:2018. Also see BS 5893:2018. Also see BS 5893:2018.

26. Foundations to be in accordance with BS5839 part 3. Also see BS 5893:2018. Also see BS 5893:2018. Also see BS 5893:2018.
27. Foundations to be in accordance with BS5839 part 3. Also see BS 5893:2018. Also see BS 5893:2018. Also see BS 5893:2018.
28. Foundations to be in accordance with BS5839 part 3. Also see BS 5893:2018. Also see BS 5893:2018. Also see BS 5893:2018.
29. Foundations to be in accordance with BS5839 part 3. Also see BS 5893:2018. Also see BS 5893:2018. Also see BS 5893:2018.
30. Foundations to be in accordance with BS5839 part 3. Also see BS 5893:2018. Also see BS 5893:2018. Also see BS 5893:2018.
31. Foundations to be in accordance with BS5839 part 3. Also see BS 5893:2018. Also see BS 5893:2018. Also see BS 5893:2018.
32. Foundations to be in accordance with BS5839 part 3. Also see BS 5893:2018. Also see BS 5893:2018. Also see BS 5893:2018.
33. Foundations to be in accordance with BS5839 part 3. Also see BS 5893:2018. Also see BS 5893:2018. Also see BS 5893:2018.
34. Foundations to be in accordance with BS5839 part 3. Also see BS 5893:2018. Also see BS 5893:2018. Also see BS 5893:2018.
35. Foundations to be in accordance with BS5839 part 3. Also see BS 5893:2018. Also see BS 5893:2018. Also see BS 5893:2018.

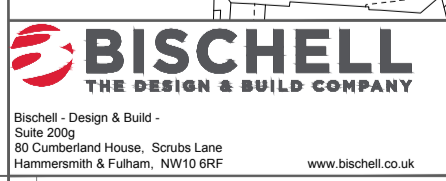
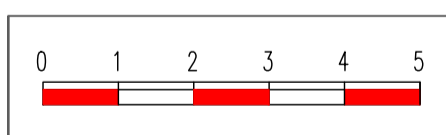
36. Foundations to be in accordance with BS5839 part 3. Also see BS 5893:2018. Also see BS 5893:2018. Also see BS 5893:2018.
37. Foundations to be in accordance with BS5839 part 3. Also see BS 5893:2018. Also see BS 5893:2018. Also see BS 5893:2018.
38. Foundations to be in accordance with BS5839 part 3. Also see BS 5893:2018. Also see BS 5893:2018. Also see BS 5893:2018.
39. Foundations to be in accordance with BS5839 part 3. Also see BS 5893:2018. Also see BS 5893:2018. Also see BS 5893:2018.
40. Foundations to be in accordance with BS5839 part 3. Also see BS 5893:2018. Also see BS 5893:2018. Also see BS 5893:2018.
41. Foundations to be in accordance with BS5839 part 3. Also see BS 5893:2018. Also see BS 5893:2018. Also see BS 5893:2018.
42. Foundations to be in accordance with BS5839 part 3. Also see BS 5893:2018. Also see BS 5893:2018. Also see BS 5893:2018.
43. Foundations to be in accordance with BS5839 part 3. Also see BS 5893:2018. Also see BS 5893:2018. Also see BS 5893:2018.
44. Foundations to be in accordance with BS5839 part 3. Also see BS 5893:2018. Also see BS 5893:2018. Also see BS 5893:2018.
45. Foundations to be in accordance with BS5839 part 3. Also see BS 5893:2018. Also see BS 5893:2018. Also see BS 5893:2018.

46. Foundations to be in accordance with BS5839 part 3. Also see BS 5893:2018. Also see BS 5893:2018. Also see BS 5893:2018.
47. Foundations to be in accordance with BS5839 part 3. Also see BS 5893:2018. Also see BS 5893:2018. Also see BS 5893:2018.
48. Foundations to be in accordance with BS5839 part 3. Also see BS 5893:2018. Also see BS 5893:2018. Also see BS 5893:2018.
49. Foundations to be in accordance with BS5839 part 3. Also see BS 5893:2018. Also see BS 5893:2018. Also see BS 5893:2018.
50. Foundations to be in accordance with BS5839 part 3. Also see BS 5893:2018. Also see BS 5893:2018. Also see BS 5893:2018.
51. Foundations to be in accordance with BS5839 part 3. Also see BS 5893:2018. Also see BS 5893:2018. Also see BS 5893:2018.
52. Foundations to be in accordance with BS5839 part 3. Also see BS 5893:2018. Also see BS 5893:2018. Also see BS 5893:2018.
53. Foundations to be in accordance with BS5839 part 3. Also see BS 5893:2018. Also see BS 5893:2018. Also see BS 5893:2018.
54. Foundations to be in accordance with BS5839 part 3. Also see BS 5893:2018. Also see BS 5893:2018. Also see BS 5893:2018.
55. Foundations to be in accordance with BS5839 part 3. Also see BS 5893:2018. Also see BS 5893:2018. Also see BS 5893:2018.

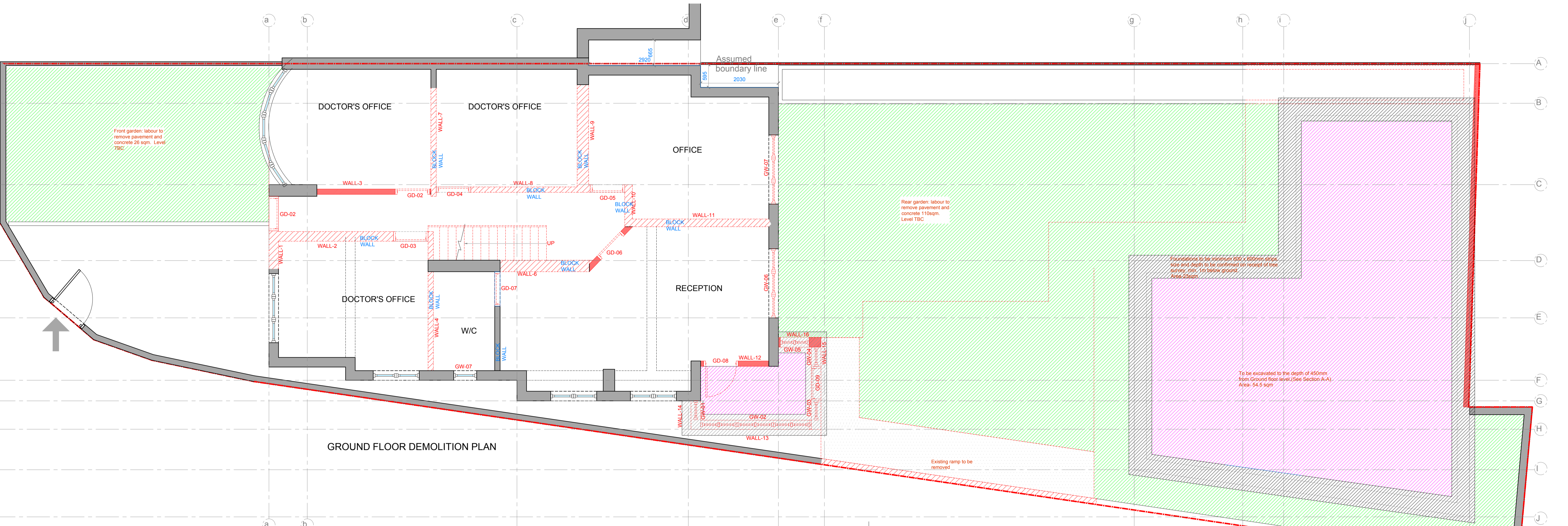
56. Foundations to be in accordance with BS5839 part 3. Also see BS 5893:2018. Also see BS 5893:2018. Also see BS 5893:2018.
57. Foundations to be in accordance with BS5839 part 3. Also see BS 5893:2018. Also see BS 5893:2018. Also see BS 5893:2018.
58. Foundations to be in accordance with BS5839 part 3. Also see BS 5893:2018. Also see BS 5893:2018. Also see BS 5893:2018.
59. Foundations to be in accordance with BS5839 part 3. Also see BS 5893:2018. Also see BS 5893:2018. Also see BS 5893:2018.
60. Foundations to be in accordance with BS5839 part 3. Also see BS 5893:2018. Also see BS 5893:2018. Also see BS 5893:2018.
61. Foundations to be in accordance with BS5839 part 3. Also see BS 5893:2018. Also see BS 5893:2018. Also see BS 5893:2018.
62. Foundations to be in accordance with BS5839 part 3. Also see BS 5893:2018. Also see BS 5893:2018. Also see BS 5893:2018.
63. Foundations to be in accordance with BS5839 part 3. Also see BS 5893:2018. Also see BS 5893:2018. Also see BS 5893:2018.
64. Foundations to be in accordance with BS5839 part 3. Also see BS 5893:2018. Also see BS 5893:2018. Also see BS 5893:2018.
65. Foundations to be in accordance with BS5839 part 3. Also see BS 5893:2018. Also see BS 5893:2018. Also see BS 5893:2018.

66. Foundations to be in accordance with BS5839 part 3. Also see BS 5893:2018. Also see BS 5893:2018. Also see BS 5893:2018.
67. Foundations to be in accordance with BS5839 part 3. Also see BS 5893:2018. Also see BS 5893:2018. Also see BS 5893:2018.
68. Foundations to be in accordance with BS5839 part 3. Also see BS 5893:2018. Also see BS 5893:2018. Also see BS 5893:2018.
69. Foundations to be in accordance with BS5839 part 3. Also see BS 5893:2018. Also see BS 5893:2018. Also see BS 5893:2018.
70. Foundations to be in accordance with BS5839 part 3. Also see BS 5893:2018. Also see BS 5893:2018. Also see BS 5893:2018.
71. Foundations to be in accordance with BS5839 part 3. Also see BS 5893:2018. Also see BS 5893:2018. Also see BS 5893:2018.
72. Foundations to be in accordance with BS5839 part 3. Also see BS 5893:2018. Also see BS 5893:2018. Also see BS 5893:2018.
73. Foundations to be in accordance with BS5839 part 3. Also see BS 5893:2018. Also see BS 5893:2018. Also see BS 5893:2018.
74. Foundations to be in accordance with BS5839 part 3. Also see BS 5893:2018. Also see BS 5893:2018. Also see BS 5893:2018.
75. Foundations to be in accordance with BS5839 part 3. Also see BS 5893:2018. Also see BS 5893:2018. Also see BS 5893:2018.

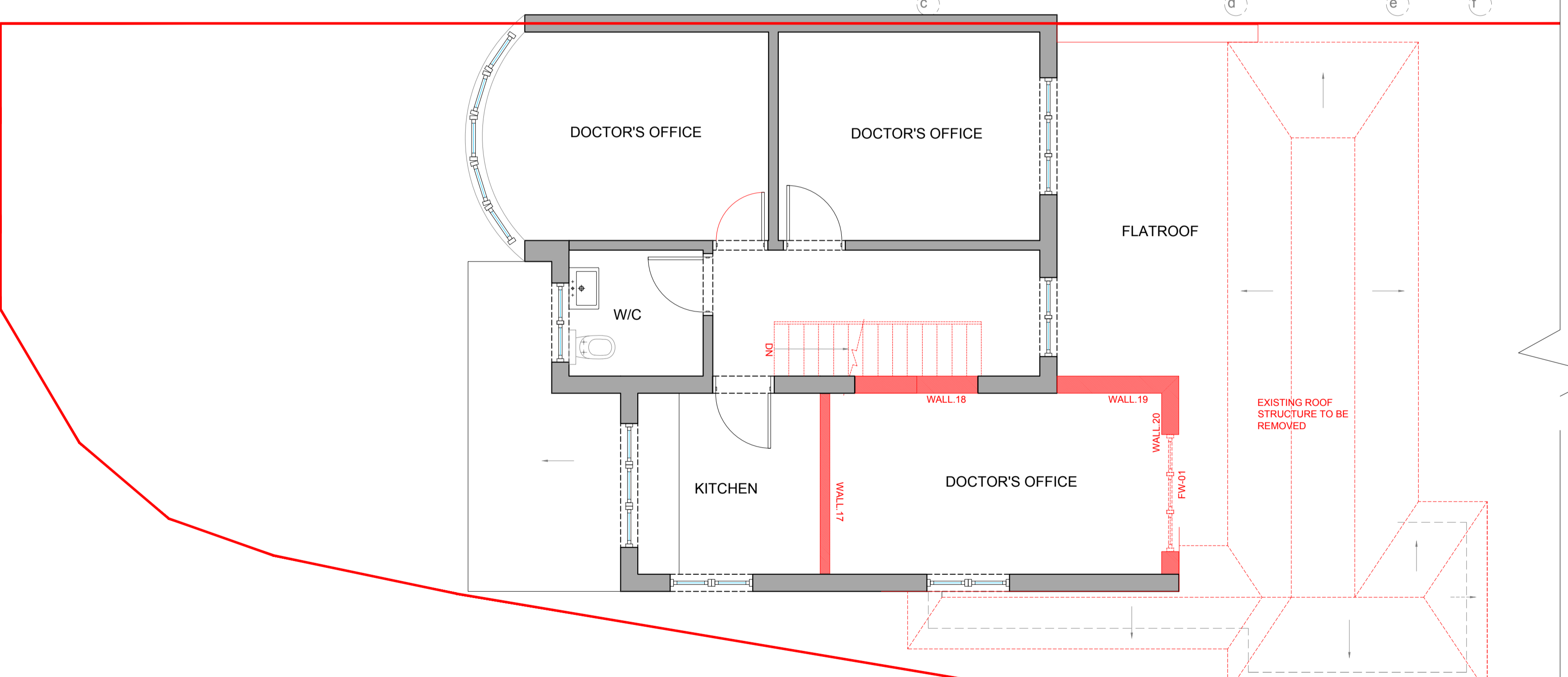
76. Foundations to be in accordance with BS5839 part 3. Also see BS 5893:2018. Also see BS 5893:2018. Also see BS 5893:2018.
77. Foundations to be in accordance with BS5839 part 3. Also see BS 5893:2018. Also see BS 5893:2018. Also see BS 5893:2018.
78. Foundations to be in accordance with BS5839 part 3. Also see BS 5893:2018. Also see BS 5893:2018. Also see BS 5893:2018.
79. Foundations to be in accordance with BS5839 part 3. Also see BS 5893:2018. Also see BS 5893:2018. Also see BS 5893:2018.
80. Foundations to be in accordance with BS5839 part 3. Also see BS 5893:2018. Also see BS 5893:2018. Also see BS 5893:2018.
81. Foundations to be in accordance with BS5839 part 3. Also see BS 5893:2018. Also see BS 5893:2018. Also see BS 5893:2018.
82. Foundations to be in accordance with BS5839 part 3. Also see BS 5893:2018. Also see BS 5893:2018. Also see BS 5893:2018.
83. Foundations to be in accordance with BS5839 part 3. Also see BS 5893:2018. Also see BS 5893:2018. Also see BS 5893:2018.
84. Foundations to be in accordance with BS5839 part 3. Also see BS 5893:2018. Also see BS 5893:2018. Also see BS 5893:2018.
85. Foundations to be in accordance with BS5839 part 3. Also see BS 5893:2018. Also see BS 5893:2018. Also see BS 5893:2018.



31 Ribchester Ave, Perivale, Greenford UB6 8TG			
EXISTING FLOOR PLAN			
Building Regs			
Scale:	1:50 GA1	Date:	21.10.16
Drawn by:	HC	Check by:	
Project No:	001-R0	Sheet No:	0



GROUND FLOOR DEMOLITION PLAN



FIRST FLOOR PLAN DEMOLITION PLAN

THIS DRAWING IS COPYRIGHT AND NOT BE LOANED, REPRODUCED OR COPIED IN WHOLE OR IN PART WITHOUT THE WRITTEN PERMISSION OF BISCHHELL. THE CLIENT ACCEPTS THE DESIGN AND CONSTRUCTION OF THE WORKS SHOWN ON THIS DRAWING AND THE CLIENT'S RESPONSIBILITY FOR THE DESIGN AND CONSTRUCTION OF THE WORKS SHOWN ON THIS DRAWING IS NOT TO BE LIMITED BY THE FACT THAT THIS DRAWING IS A DESIGN OR CONSTRUCTION DOCUMENT.

- GENERAL NOTES**
- CHECK ALL DIMENSIONS ON SITE.
 - ALL DIMENSIONS ARE IN MILLIMETRES UNLESS OTHERWISE STATED.
 - ALL VERTICAL REQUIREMENTS ASSUME GROUND TO BE LEVEL UNLESS OTHERWISE STATED.
 - THIS DRAWING SHOULD BE READ IN CONJUNCTION WITH THE GENERAL NOTES.
 - WORKS TO BE CARRIED OUT WITH MATERIALS AND WORKMANSHIP IN COMPLIANCE WITH APPROVED DOCUMENT FOR REGULATION 7 THE BUILDING REGULATIONS 2010.
 - WORKS TO BE CARRIED OUT IN A SAFE MANNER IN ACCORDANCE WITH CONSTRUCTION (S&W) REGULATIONS 2007.
 - OPEN UP EXISTING STRUCTURE AS REQUIRED BY THE BUILDING REGULATIONS.
 - THIRD PARTY SUPPLIER TO MEASURE ON SITE BEFORE MANUFACTURING.
 - GENERAL CONTRACTOR TO VERIFY FIELD CONDITIONS PRIOR TO COMMENCEMENT OF EACH PORTION OF THE WORK.
 - ANY DISCREPANCIES IN DRAWINGS SHOULD BE NOTIFIED PRIOR TO COMMENCEMENT OF ANY WORKS.
 - UNLESS OTHERWISE INDICATED, PLAN DIMENSIONS ARE TO COLUMN CENTRES, NORMAL SURFACE OF ANGIOSTY, FACE OF STUDIOS AND FACE OF CONCRETE WALLS AND BEAM CENTRE TO CENTRES.
 - FLOOR LINE REFERS TO TOP OF CONCRETE SLABS. FINISH FLOORING IS INSTALLED ABOVE THE FLOOR LINE. FOR EXPRESSED FLOORS AND CURBS, SEE STRUCTURAL DRAWINGS.
 - REPETITIVE FEATURES ARE NOT ALWAYS DRAWN IN THEIR ENTIRETY AND SHALL BE COMPLETELY PROVIDED AS IF DRAWN IN FULL.
 - WHERE A DOOR IS LOCATED NEAR CORNER OF ROOM AND IS NOT LOCATED BY DIMENSION IN PLAN OR DETAIL, DIMENSION SHALL BE TAKEN FROM FACE OF STUDIOS.
 - LINE OF EXISTING FLOOR SLABS AS SHOWN ON THE BUILDING ELEVATIONS AND SECTIONS ARE APPROXIMATE.
 - FLOOR LEVELS AND BOUNDARIES ASSUMED WHERE NOTED, IDENTIFIED BY LINE DASH LINES.
 - REFER TO ARCHITECTURAL, STRUCTURAL, MECHANICAL, ELECTRICAL, CHEMICAL, SPECIFICATION AND OTHER CATEGORIES OR DRAWINGS FOR ADDITIONAL NOTES.
 - VERIFY JOBS LOCATION PRIOR TO ANY WORK AND PROVIDE COMPLETE AND REQUIRED OPENINGS THROUGH FLOORS AND WALLS. ACCESS DOORS, TURNING CURBS, ARCHES & BAYS.
 - CONTRACTOR TO CARRY OUT MOST LOGICAL SOLUTION BUT TO CHECK WITH ARCHITECT OR ENGINEER IF UNSURE. REQUESTS BY CLIENTS THAT DEVIATE FROM DESIGN VOID THE DESIGN LIABILITY.
 - SEE STRUCTURAL GENERAL NOTES AND PLANS TO COMPLEMENT ARCHITECTURAL PLANS. ALL TILES DO NOT ASSUME ANYTHING.



BISCHHELL
THE DESIGN & BUILD COMPANY

Blackburn - Design & Build
B&B 2002
185 Cornfield Road, Boreham Lane
Hemel Hempstead, Herts, MK44 0EF
www.bischhell.co.uk

GENERAL NOTES

- Work to be carried out with proper materials and in a manner that is safe and in accordance with CDM regulations. In particular the contractor is to adhere to the following:
 - Use of materials and workmanship to be in accordance with BS 5268: Part 1.
 - Use of materials and workmanship to be in accordance with BS 5268: Part 2.
 - Use of materials and workmanship to be in accordance with BS 5268: Part 3.
 - Use of materials and workmanship to be in accordance with BS 5268: Part 4.
 - Use of materials and workmanship to be in accordance with BS 5268: Part 5.
 - Use of materials and workmanship to be in accordance with BS 5268: Part 6.
 - Use of materials and workmanship to be in accordance with BS 5268: Part 7.
 - Use of materials and workmanship to be in accordance with BS 5268: Part 8.
 - Use of materials and workmanship to be in accordance with BS 5268: Part 9.
 - Use of materials and workmanship to be in accordance with BS 5268: Part 10.
 - Use of materials and workmanship to be in accordance with BS 5268: Part 11.
 - Use of materials and workmanship to be in accordance with BS 5268: Part 12.
 - Use of materials and workmanship to be in accordance with BS 5268: Part 13.
 - Use of materials and workmanship to be in accordance with BS 5268: Part 14.
 - Use of materials and workmanship to be in accordance with BS 5268: Part 15.
 - Use of materials and workmanship to be in accordance with BS 5268: Part 16.
 - Use of materials and workmanship to be in accordance with BS 5268: Part 17.
 - Use of materials and workmanship to be in accordance with BS 5268: Part 18.
 - Use of materials and workmanship to be in accordance with BS 5268: Part 19.
 - Use of materials and workmanship to be in accordance with BS 5268: Part 20.
 - Use of materials and workmanship to be in accordance with BS 5268: Part 21.
 - Use of materials and workmanship to be in accordance with BS 5268: Part 22.
 - Use of materials and workmanship to be in accordance with BS 5268: Part 23.
 - Use of materials and workmanship to be in accordance with BS 5268: Part 24.
 - Use of materials and workmanship to be in accordance with BS 5268: Part 25.
 - Use of materials and workmanship to be in accordance with BS 5268: Part 26.
 - Use of materials and workmanship to be in accordance with BS 5268: Part 27.
 - Use of materials and workmanship to be in accordance with BS 5268: Part 28.
 - Use of materials and workmanship to be in accordance with BS 5268: Part 29.
 - Use of materials and workmanship to be in accordance with BS 5268: Part 30.
 - Use of materials and workmanship to be in accordance with BS 5268: Part 31.
 - Use of materials and workmanship to be in accordance with BS 5268: Part 32.
 - Use of materials and workmanship to be in accordance with BS 5268: Part 33.
 - Use of materials and workmanship to be in accordance with BS 5268: Part 34.
 - Use of materials and workmanship to be in accordance with BS 5268: Part 35.
 - Use of materials and workmanship to be in accordance with BS 5268: Part 36.
 - Use of materials and workmanship to be in accordance with BS 5268: Part 37.
 - Use of materials and workmanship to be in accordance with BS 5268: Part 38.
 - Use of materials and workmanship to be in accordance with BS 5268: Part 39.
 - Use of materials and workmanship to be in accordance with BS 5268: Part 40.
 - Use of materials and workmanship to be in accordance with BS 5268: Part 41.
 - Use of materials and workmanship to be in accordance with BS 5268: Part 42.
 - Use of materials and workmanship to be in accordance with BS 5268: Part 43.
 - Use of materials and workmanship to be in accordance with BS 5268: Part 44.
 - Use of materials and workmanship to be in accordance with BS 5268: Part 45.
 - Use of materials and workmanship to be in accordance with BS 5268: Part 46.
 - Use of materials and workmanship to be in accordance with BS 5268: Part 47.
 - Use of materials and workmanship to be in accordance with BS 5268: Part 48.
 - Use of materials and workmanship to be in accordance with BS 5268: Part 49.
 - Use of materials and workmanship to be in accordance with BS 5268: Part 50.
 - Use of materials and workmanship to be in accordance with BS 5268: Part 51.
 - Use of materials and workmanship to be in accordance with BS 5268: Part 52.
 - Use of materials and workmanship to be in accordance with BS 5268: Part 53.
 - Use of materials and workmanship to be in accordance with BS 5268: Part 54.
 - Use of materials and workmanship to be in accordance with BS 5268: Part 55.
 - Use of materials and workmanship to be in accordance with BS 5268: Part 56.
 - Use of materials and workmanship to be in accordance with BS 5268: Part 57.
 - Use of materials and workmanship to be in accordance with BS 5268: Part 58.
 - Use of materials and workmanship to be in accordance with BS 5268: Part 59.
 - Use of materials and workmanship to be in accordance with BS 5268: Part 60.
 - Use of materials and workmanship to be in accordance with BS 5268: Part 61.
 - Use of materials and workmanship to be in accordance with BS 5268: Part 62.
 - Use of materials and workmanship to be in accordance with BS 5268: Part 63.
 - Use of materials and workmanship to be in accordance with BS 5268: Part 64.
 - Use of materials and workmanship to be in accordance with BS 5268: Part 65.
 - Use of materials and workmanship to be in accordance with BS 5268: Part 66.
 - Use of materials and workmanship to be in accordance with BS 5268: Part 67.
 - Use of materials and workmanship to be in accordance with BS 5268: Part 68.
 - Use of materials and workmanship to be in accordance with BS 5268: Part 69.
 - Use of materials and workmanship to be in accordance with BS 5268: Part 70.
 - Use of materials and workmanship to be in accordance with BS 5268: Part 71.
 - Use of materials and workmanship to be in accordance with BS 5268: Part 72.
 - Use of materials and workmanship to be in accordance with BS 5268: Part 73.
 - Use of materials and workmanship to be in accordance with BS 5268: Part 74.
 - Use of materials and workmanship to be in accordance with BS 5268: Part 75.
 - Use of materials and workmanship to be in accordance with BS 5268: Part 76.
 - Use of materials and workmanship to be in accordance with BS 5268: Part 77.
 - Use of materials and workmanship to be in accordance with BS 5268: Part 78.
 - Use of materials and workmanship to be in accordance with BS 5268: Part 79.
 - Use of materials and workmanship to be in accordance with BS 5268: Part 80.
 - Use of materials and workmanship to be in accordance with BS 5268: Part 81.
 - Use of materials and workmanship to be in accordance with BS 5268: Part 82.
 - Use of materials and workmanship to be in accordance with BS 5268: Part 83.
 - Use of materials and workmanship to be in accordance with BS 5268: Part 84.
 - Use of materials and workmanship to be in accordance with BS 5268: Part 85.
 - Use of materials and workmanship to be in accordance with BS 5268: Part 86.
 - Use of materials and workmanship to be in accordance with BS 5268: Part 87.
 - Use of materials and workmanship to be in accordance with BS 5268: Part 88.
 - Use of materials and workmanship to be in accordance with BS 5268: Part 89.
 - Use of materials and workmanship to be in accordance with BS 5268: Part 90.
 - Use of materials and workmanship to be in accordance with BS 5268: Part 91.
 - Use of materials and workmanship to be in accordance with BS 5268: Part 92.
 - Use of materials and workmanship to be in accordance with BS 5268: Part 93.
 - Use of materials and workmanship to be in accordance with BS 5268: Part 94.
 - Use of materials and workmanship to be in accordance with BS 5268: Part 95.
 - Use of materials and workmanship to be in accordance with BS 5268: Part 96.
 - Use of materials and workmanship to be in accordance with BS 5268: Part 97.
 - Use of materials and workmanship to be in accordance with BS 5268: Part 98.
 - Use of materials and workmanship to be in accordance with BS 5268: Part 99.
 - Use of materials and workmanship to be in accordance with BS 5268: Part 100.

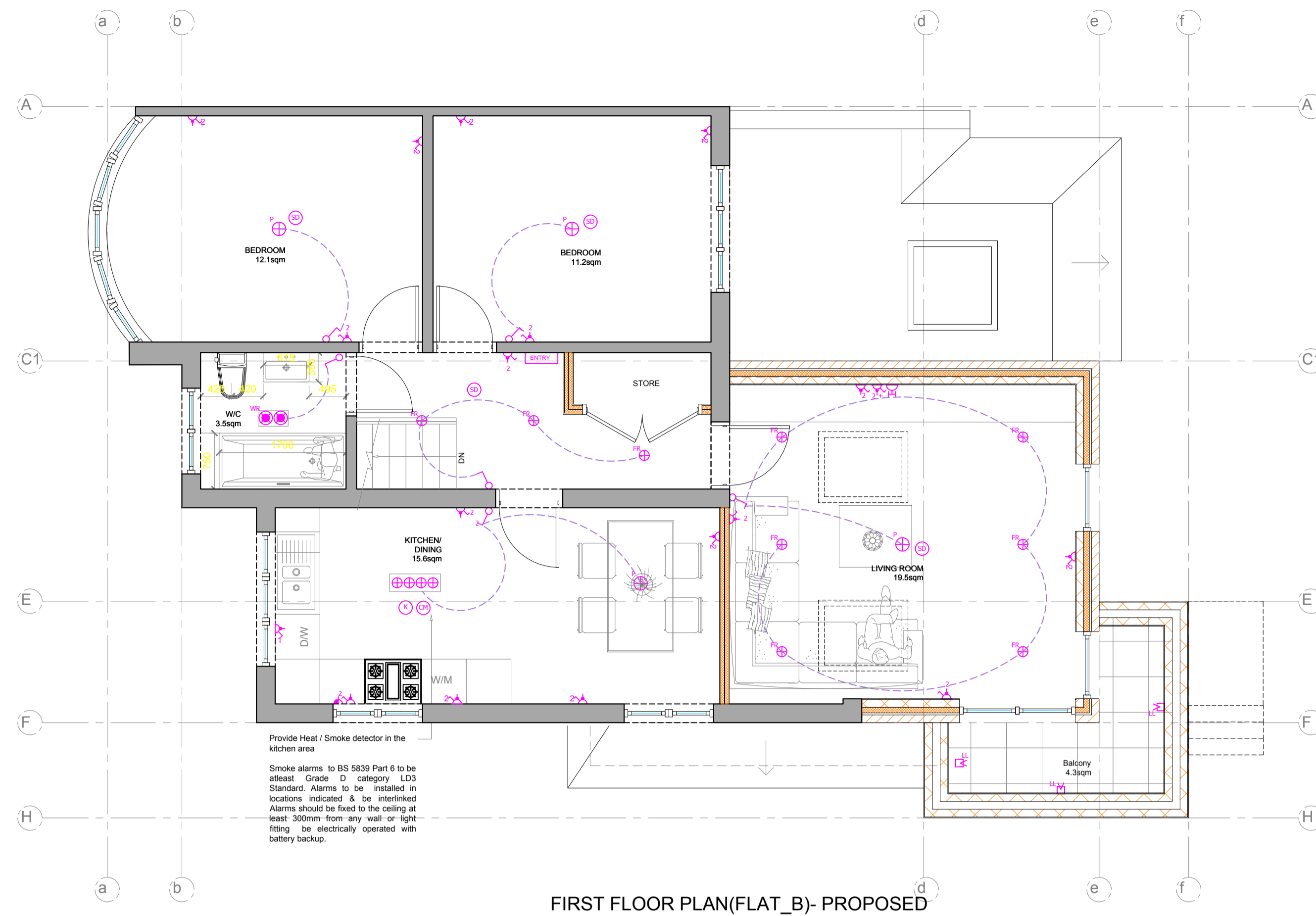
31 Ribchester Ave, Perivale, Greenford UB8 8TG

DEMOLITION PLAN

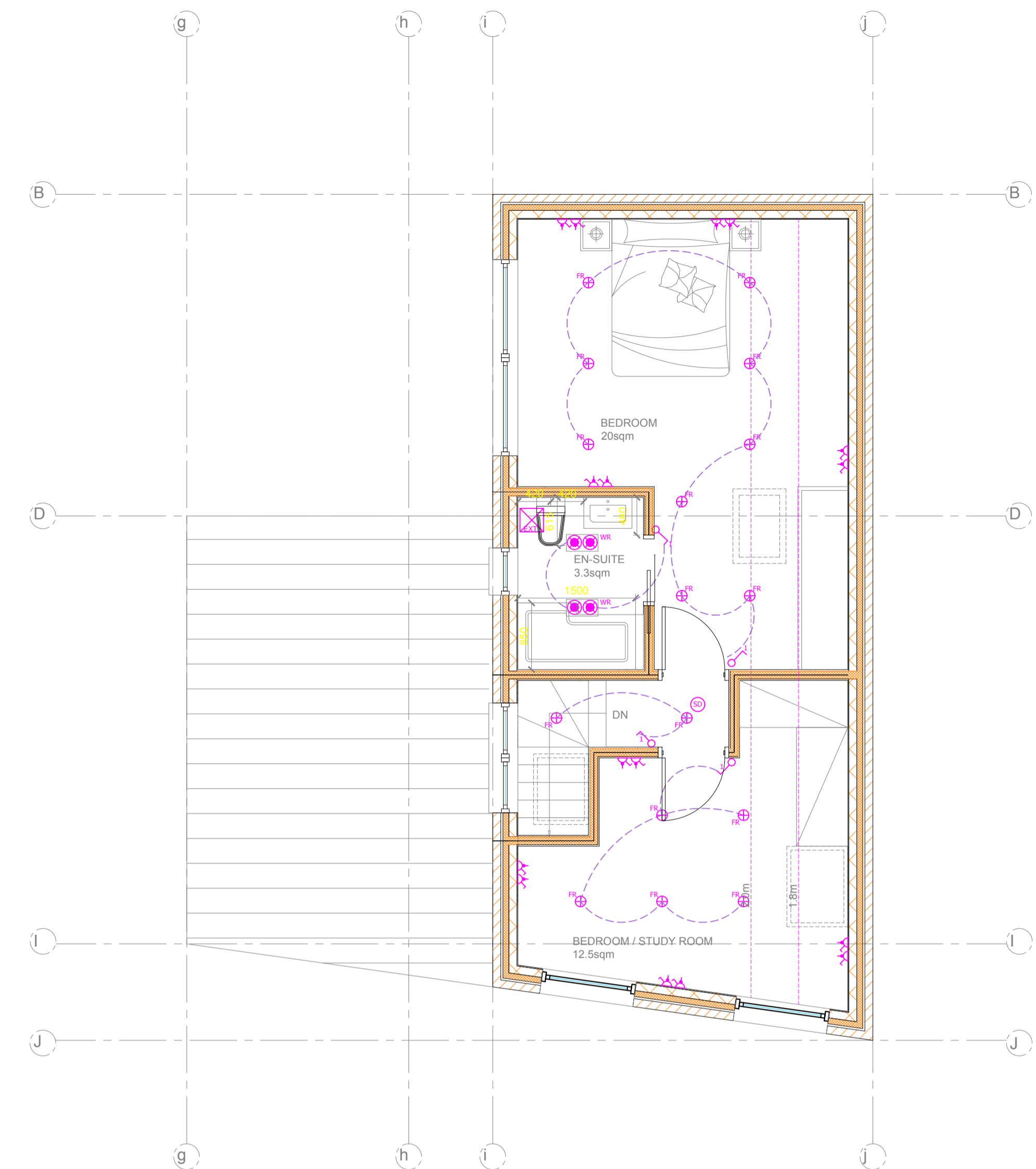
Building Refs:

150 0A1	21	15 16	HC
---------	----	-------	----

002-RO



FIRST FLOOR PLAN (FLAT_B) - PROPOSED



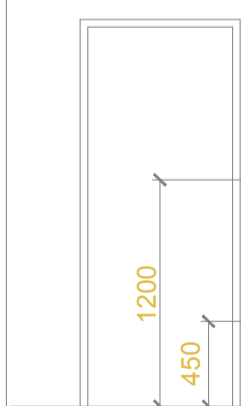
FIRST FLOOR PLAN (FLAT_C) - PROPOSED

KEY TO NEW ELECTRICS & LIGHTING

- ⊕ CARBON MONOXIDE DETECTOR
- ⊕ SMOKE DETECTOR TO BS 5839-PART1 & BS 3116-PART4
- ⊕ HEAT DETECTOR TO BS 5839-PART1 & BS 3116-PART4
- ⊕ EMERGENCY BULKHEAD LIGHT, TO BS5266-PART1
- ⊕ DIRECTIONAL RECESSED CEILING LIGHT
- ⊕ FIXED RECESSED CEILING LIGHT
- ⊕ FLOOR MOUNTED UPLIGHT
- ⊕ LOW LEVEL FLOOR WASHER WITH PIR
- ⊕ WALL LIGHT
- ⊕ WATERPROOF RECESSED CEILING LIGHT
- ⊕ UNDER WALL UNIT LIGHT OR CUPOBOARD LIGHT
- ⊕ LED LIGHT STRIP - 15mm PROFILE
- ⊕ SHAVER SOCKET
- ⊕ STANDARD LIGHT SWITCH (1,2 or 3 way) OR 'D' FOR DIMMER SWITCH
- ⊕ LIGHT SWITCH CONTROL PANEL
- ⊕ SONOS IN CEILING SPEAKER
- ⊕ 13amp SINGLE & DOUBLE POWER POINTS @ 1800mm LEVEL
- ⊕ 5amp LAMP SOCKET POINTS
- ⊕ 13amp FUSED SPUR
- ⊕ TELEPHONE OUTLET
- ⊕ M = MASTER BT OUTLET (WHERE NOTED)
- ⊕ ETHERNET CAT6 2x TV CT100 & 2 FM (BT)
- ⊕ FUSE BOARD & CONSUMER UNIT
- ⊕ FUSE BOARD & CONSUMER UNIT FOR COMMUNAL AREAS
- ⊕ WALL MOUNTED ENTRY PHONE SYSTEM
- ⊕ FLOOR MOUNTED UPLIGHT
- ⊕ LED TUBE LIGHTING WITH WIRELESS MOVEMENT DETECTORS
- ⊕ 40amp COOKER SUPPLY
- ⊕ COAXIAL CABLES TO EACH LOCATION TO BE STAR WIRED TO COMMUNICATION RACK.
- ⊕ CAT 6 CABLES TO EACH LOCATION TO BE STAR WIRED TO CENTRAL COMMUNICATION. CABLES TO BE TERMINATED ONTO A CAT 6 PATCH PANEL IN COMM RACK AND ON CERTIFIED FACE PLATES IN THE ROOMS-USING A SINGLE MANUFACTURER.
- ⊕ FIRE ALARM ACTUATION POINT
- ⊕ FIRE ALARM - SOUND
- ⊕ DENOTES - EMERGENCY
- ⊕ OPENABLE VENT AT HIGH LEVEL FOR FIRE SERVICE USE (1.0 m2 min free area)
- ⊕ FIRE ALARM INTERFACE
- ⊕ GAS SUPPLY DUCT
- ⊕ WATER SUPPLY DUCT
- ⊕ SKY PLUS SYSTEM INTERCOM BT (MAIN PHONE LINE) ELECTRICAL DUCT
- ⊕ MAIN DISTRIBUTION POINT FOR SATELLITE SIGNAL. COAXIAL CABLE FROM ROOF TO BE WIRED TO THIS POINT.
- ⊕ BT MASTER SOCKET
- ⊕ CCTV Camera
- ⊕ CARBON MONOXIDE DETECTOR. Carbon monoxide detectors fitted in accordance with manufactures instructions and positioned in accordance with the BRE GBG30 600mm from ceiling

Part 'P'

All electrical work required to meet the requirements of part 'P' (electrical safety) must be designed, installed, inspected and tested by a person competent to do so.

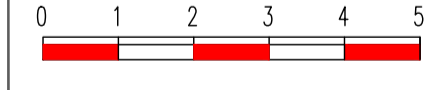


- ⊕ Light switches & sockets, etc... to be a max. 1200mm above f.f.l.
- ⊕ Sockets, t.v. points & b.t. points to be a min. 450mm above f.f.l.

ELECTRICS SETTING - OUT [N.T.S.]

THIS DRAWING IS COPYRIGHT AND NOT TO BE REPRODUCED OR TRANSMITTED IN ANY FORM OR BY ANY MEANS, WITHOUT THE WRITTEN PERMISSION OF THE DESIGNER. THE DESIGNER ACCEPTS NO LIABILITY FOR ANY DAMAGE OR LOSS OF PROFITS OR BUSINESS ARISING FROM THE USE OF THIS DRAWING. THE DESIGNER'S LIABILITY IS LIMITED TO THE DESIGN AND THE PREPARATION OF THIS DRAWING. THE DESIGNER'S LIABILITY IS LIMITED TO THE DESIGN AND THE PREPARATION OF THIS DRAWING.

- GENERAL NOTES
1. CHECK ALL DIMENSIONS ON SITE.
 2. ALL DIMENSIONS ARE IN MILLIMETRES UNLESS OTHERWISE STATED.
 3. ALL VERTICAL REQUIREMENTS ASSUME GRAVITY TO BE LEVEL UNLESS OTHERWISE STATED.
 4. THE DRAWING IS TO BE READ IN CONJUNCTION WITH THE GENERAL NOTES.
 5. WORKS TO BE CARRIED OUT WITH MATERIALS AND WORKMANSHIP IN COMPLIANCE WITH APPROVED DOCUMENT FOR REGULATION 7 THE BUILDING REGULATIONS 2010.
 6. WORKS TO BE CARRIED OUT IN A SAFE MANNER IN ACCORDANCE WITH THE BUILDING REGULATIONS 2010.
 7. OPEN UP EXISTING STRUCTURE AS REQUIRED BY THE BUILDING REGULATIONS 2010.
 8. THIRD PARTY SUPPLIER TO MEASURE ON SITE BEFORE MANUFACTURING.
 9. GENERAL CONTRACTOR TO VERIFY FIELD CONDITIONS PRIOR TO COMMENCEMENT OF EACH PORTION OF THE WORK.
 10. NEW PROPOSED WORKS IN DRAWINGS SHOULD BE NOTIFIED PRIOR TO COMMENCING ANY WORKS.
 11. UNLESS OTHERWISE INDICATED, PLAN DIMENSIONS ARE TO COLUMN CENTRE TO COLUMN CENTRE, NORMAL SURFACE OF MASONRY FACE OF STUDO AND FACE OF CONCRETE WALLS AND BEAM CENTRE TO CENTRE.
 12. FLOOR LINE REFERS TO TOP OF CONCRETE SLAB. FINISH FLOORING IS INSTALLED ABOVE THE FLOOR LINE. FOR EXPRESSED FLOORS AND CURBS, SEE STRUCTURAL DRAWINGS.
 13. DIMENSIVE FEATURES ARE NOT DRAWN IN THE ENTIRETY AND SHALL BE COMPLETELY PROVIDED AS SHOWN IN FULL.
 14. WHERE A DOOR IS LOCATED NEAR CORNER OF ROOM AND IS NOT LOCATED BY DIMENSION LINE OR DETAIL, DIMENSION SHALL BE TAKEN FROM FACE OF STUDO (WALL).
 15. LINE OF EXISTING FLOOR SLAB, AS SHOWN ON THE BUILDING ELEVATIONS AND SECTIONS ARE APPROXIMATE.
 16. FLOOR LEVELS AND BOUNDARIES ASSUMED WHERE NOTED, IDENTIFIED BY THE DASH LINES.
 17. REFER TO ARCHITECTURAL, STRUCTURAL, MECHANICAL, ELECTRICAL, GENERAL IDENTIFICATION AND OTHER CATEGORIES OR DRAWINGS FOR ADDITIONAL NOTES.
 18. VERIFY ALL CONDITIONS PRIOR TO DESIGN, AND PROVIDE COMPLETE AND REQUIRED OPENINGS THROUGH FLOORS AND WALLS. ACCESS DOORS, FURNITURE, CURBS, ARCHES & BAYS.
 19. CONTRACTOR TO CARRY OUT MOST LOGICAL SOLUTION BUT TO CHECK WITH ARCHITECT OR ENGINEER IF UNSURE. REQUESTS BY CLIENTS THAT DEVIATE FROM DESIGN VISE THE DESIGN LIABILITY.
 20. SEE STRUCTURAL GENERAL NOTES AND PLANS TO COMPLEMENT ARCHITECTURAL PLANS AT ALL TIMES DO NOT ASSUME ANYTHING.

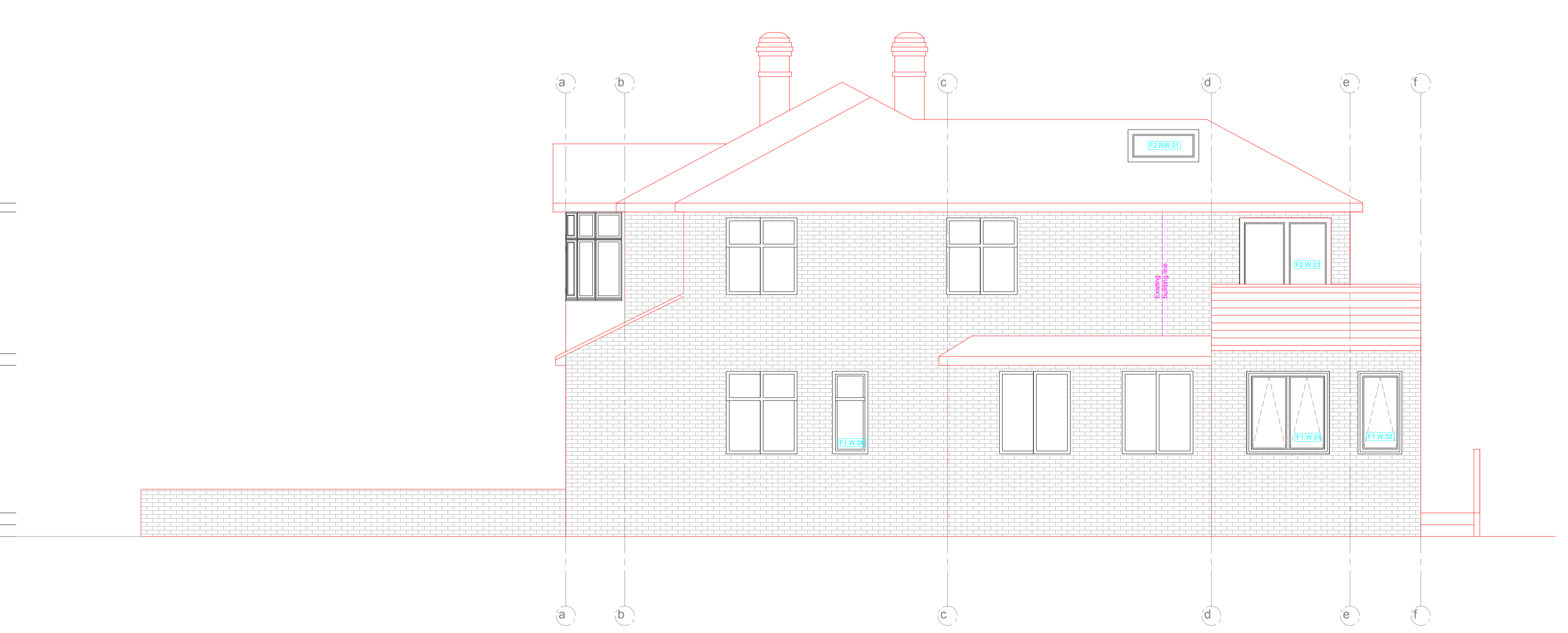
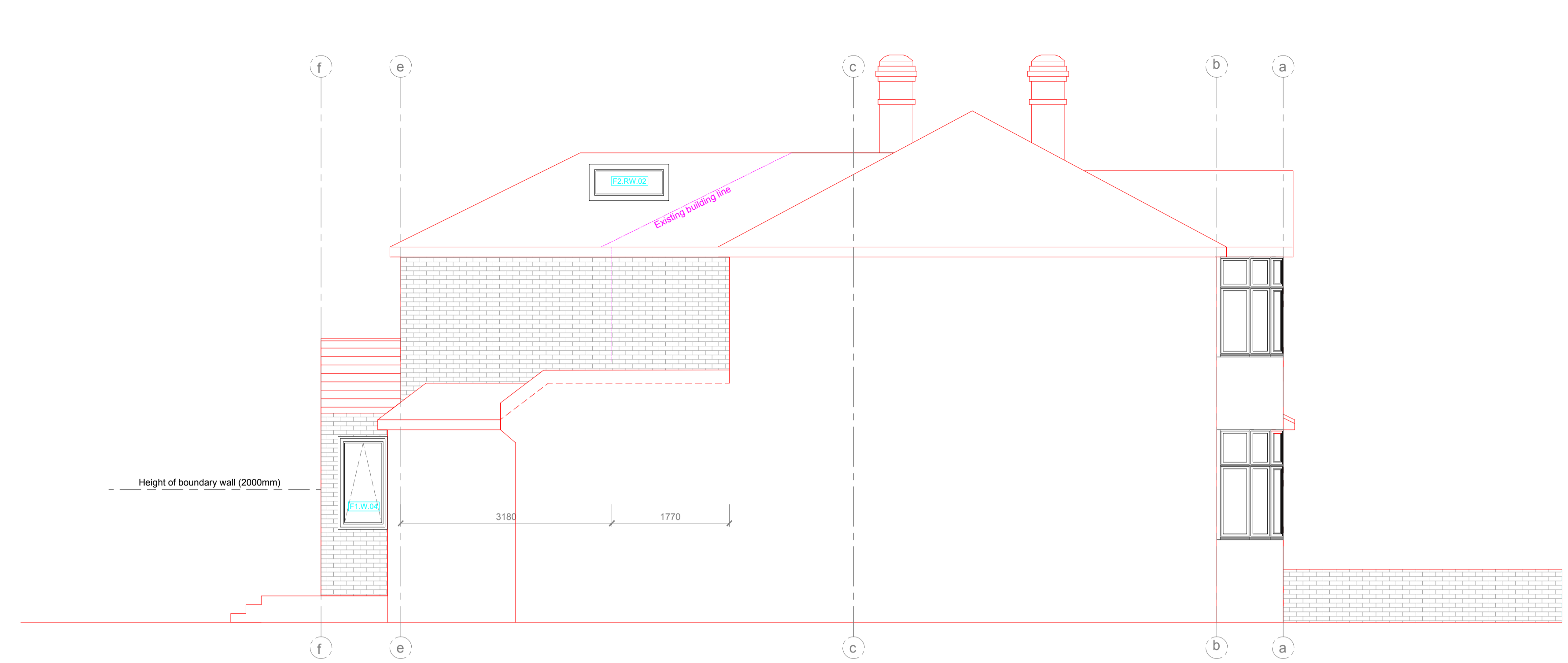
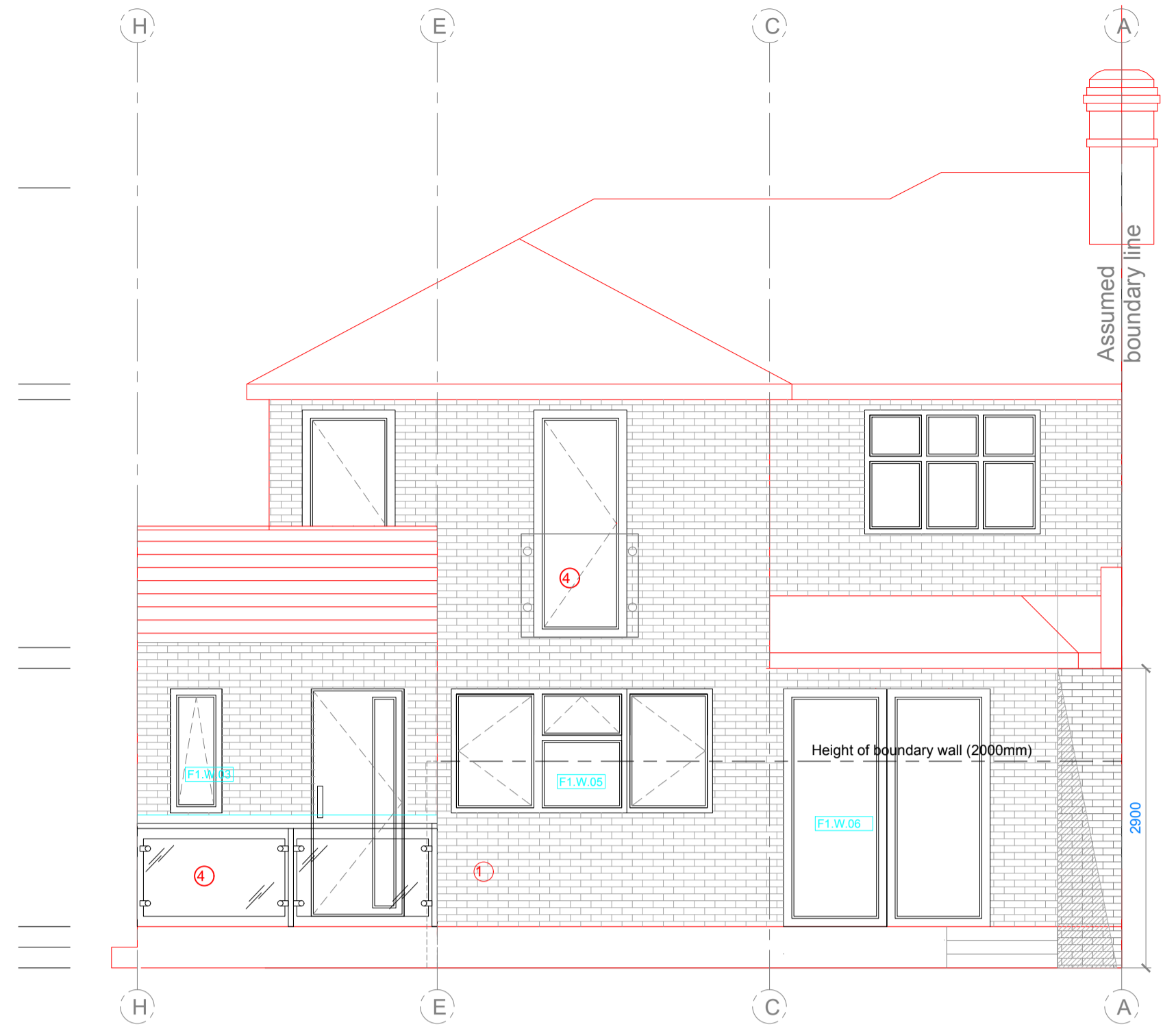


BISCHHELL
THE DESIGN & BUILD COMPANY

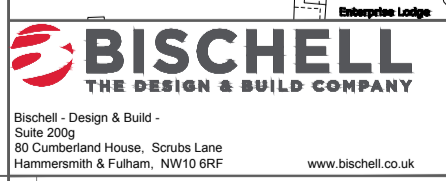
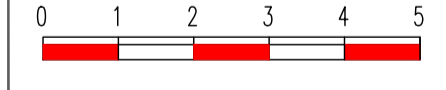
Blanch - Design & Build - Blach 2022
 85 Cornfield House, South Lane
 Hornsey Heath & Fulham, NW10 5BF
 www.bischhell.co.uk

Building Regs			
Code	1-10	11-16	17-19
007-00			

- GENERAL NOTES
1. Work to be carried out with proper materials and in a manner that is safe and in accordance with CDM regulations. In particular the contractor is to allow for imposed personnel, heavy loads, wind or high level services causing potential materials, etc. to fall.
 2. Measure to comply with current British Standards, and in accordance with appropriate agreement certificates, including testing of structural & non-structural work with Part 4.
 3. Check all dimensions on site. Do not assume from drawings.
 4. All materials to comply with the ground to be supported. Head work to be selected and fixed from appropriate material.
 5. All structural members, roof trusses and external gables to be fixed with appropriate penetration.
 6. Check all existing structure as required by the building regulatory and structural requirements.
 7. Provide shoring at mid spans of gable spanning 2.5 - 4.5 m and at third span for jobs over 4.5 m.
 8. All areas which are not shown to be worked on, or in accordance with local authority requirements.
 9. Electrical work to be designed & carried out by a competent registered person in accordance with current NICEIC recommendations & BS 7671. Include in quotation & billing and providing completion & inspection certificate on completion. Electrician to test and produce a signed report to BS 5839 where this has been an element.
 10. Works to comply with current requirements of BS5839 part 6.
 11. Minimum spacing of joints for 100mm cavity. (Stone/brickwork, 400 mm vertically, 200 mm at all unbalanced joints with 220mm of overlap).
 12. Flat structure and brickwork to be properly bonded and constructed of clay brick or BS6091 10K concrete blocks to meet BS 5625 part 1 (B1).
 13. Flat structure and brickwork to be properly bonded and constructed of clay brick or BS6091 10K concrete blocks to meet BS 5625 part 1 (B1).
 14. Brick work and block work to be properly bonded and constructed of clay brick or BS6091 10K concrete blocks to meet BS 5625 part 1 (B1).
 15. Masonry to be fixed to appropriate structure to BS5625 part 6. Suitable masonry cement below top.
 16. Masonry to be fixed to appropriate structure to BS5625 part 6. Suitable masonry cement below top.
 17. Foundations to be situated entirely under walls, minimum thickness 100mm, consisting of concrete to BS101 10K aggregate to BS 882 10K 1000. (Class CDP to BS 5328 10K 1.24 mix or similar). 10 added to support by building in position and depth. 1000 mm deep excavation below finished ground level as necessary.
 18. Structural work of concrete to meet BS5113 part 1 (B1).
 19. Structural work of concrete to meet BS5113 part 1 (B1).
 20. Structural work of concrete to meet BS5113 part 1 (B1).
 21. Structural work of concrete to meet BS5113 part 1 (B1).
 22. Structural work of concrete to meet BS5113 part 1 (B1).
 23. Structural work of concrete to meet BS5113 part 1 (B1).
 24. Structural work of concrete to meet BS5113 part 1 (B1).
 25. Structural work of concrete to meet BS5113 part 1 (B1).
 26. Discharge stacks to be wetted and fixed with durable pipes minimum 100 mm above openings. In horizontally, include suitable means as necessary.
 27. Horizontal discharge with access from inside the building to be fixed with horizontally fixed, single channel suitable means as necessary.
 28. Vertical discharge to be fixed with horizontally fixed, single channel suitable means as necessary.
 29. Horizontal discharge to be fixed with horizontally fixed, single channel suitable means as necessary.
 30. Vertical discharge to be fixed with horizontally fixed, single channel suitable means as necessary.
 31. Horizontal discharge to be fixed with horizontally fixed, single channel suitable means as necessary.
 32. Vertical discharge to be fixed with horizontally fixed, single channel suitable means as necessary.
 33. Horizontal discharge to be fixed with horizontally fixed, single channel suitable means as necessary.
 34. Vertical discharge to be fixed with horizontally fixed, single channel suitable means as necessary.
 35. Horizontal discharge to be fixed with horizontally fixed, single channel suitable means as necessary.
 36. Vertical discharge to be fixed with horizontally fixed, single channel suitable means as necessary.
 37. Horizontal discharge to be fixed with horizontally fixed, single channel suitable means as necessary.
 38. Vertical discharge to be fixed with horizontally fixed, single channel suitable means as necessary.
 39. Horizontal discharge to be fixed with horizontally fixed, single channel suitable means as necessary.
 40. Vertical discharge to be fixed with horizontally fixed, single channel suitable means as necessary.
 41. Horizontal discharge to be fixed with horizontally fixed, single channel suitable means as necessary.
 42. Vertical discharge to be fixed with horizontally fixed, single channel suitable means as necessary.
 43. Horizontal discharge to be fixed with horizontally fixed, single channel suitable means as necessary.
 44. Vertical discharge to be fixed with horizontally fixed, single channel suitable means as necessary.
 45. Horizontal discharge to be fixed with horizontally fixed, single channel suitable means as necessary.
 46. Vertical discharge to be fixed with horizontally fixed, single channel suitable means as necessary.
 47. Horizontal discharge to be fixed with horizontally fixed, single channel suitable means as necessary.
 48. Vertical discharge to be fixed with horizontally fixed, single channel suitable means as necessary.
 49. Horizontal discharge to be fixed with horizontally fixed, single channel suitable means as necessary.
 50. Vertical discharge to be fixed with horizontally fixed, single channel suitable means as necessary.
 51. Horizontal discharge to be fixed with horizontally fixed, single channel suitable means as necessary.
 52. Vertical discharge to be fixed with horizontally fixed, single channel suitable means as necessary.
 53. Horizontal discharge to be fixed with horizontally fixed, single channel suitable means as necessary.
 54. Vertical discharge to be fixed with horizontally fixed, single channel suitable means as necessary.
 55. Horizontal discharge to be fixed with horizontally fixed, single channel suitable means as necessary.
 56. Vertical discharge to be fixed with horizontally fixed, single channel suitable means as necessary.
 57. Horizontal discharge to be fixed with horizontally fixed, single channel suitable means as necessary.
 58. Vertical discharge to be fixed with horizontally fixed, single channel suitable means as necessary.
 59. Horizontal discharge to be fixed with horizontally fixed, single channel suitable means as necessary.
 60. Vertical discharge to be fixed with horizontally fixed, single channel suitable means as necessary.
 61. Horizontal discharge to be fixed with horizontally fixed, single channel suitable means as necessary.
 62. Vertical discharge to be fixed with horizontally fixed, single channel suitable means as necessary.
 63. Horizontal discharge to be fixed with horizontally fixed, single channel suitable means as necessary.
 64. Vertical discharge to be fixed with horizontally fixed, single channel suitable means as necessary.
 65. Horizontal discharge to be fixed with horizontally fixed, single channel suitable means as necessary.
 66. Vertical discharge to be fixed with horizontally fixed, single channel suitable means as necessary.
 67. Horizontal discharge to be fixed with horizontally fixed, single channel suitable means as necessary.
 68. Vertical discharge to be fixed with horizontally fixed, single channel suitable means as necessary.
 69. Horizontal discharge to be fixed with horizontally fixed, single channel suitable means as necessary.
 70. Vertical discharge to be fixed with horizontally fixed, single channel suitable means as necessary.
 71. Horizontal discharge to be fixed with horizontally fixed, single channel suitable means as necessary.
 72. Vertical discharge to be fixed with horizontally fixed, single channel suitable means as necessary.
 73. Horizontal discharge to be fixed with horizontally fixed, single channel suitable means as necessary.
 74. Vertical discharge to be fixed with horizontally fixed, single channel suitable means as necessary.
 75. Horizontal discharge to be fixed with horizontally fixed, single channel suitable means as necessary.
 76. Vertical discharge to be fixed with horizontally fixed, single channel suitable means as necessary.
 77. Horizontal discharge to be fixed with horizontally fixed, single channel suitable means as necessary.
 78. Vertical discharge to be fixed with horizontally fixed, single channel suitable means as necessary.
 79. Horizontal discharge to be fixed with horizontally fixed, single channel suitable means as necessary.
 80. Vertical discharge to be fixed with horizontally fixed, single channel suitable means as necessary.
 81. Horizontal discharge to be fixed with horizontally fixed, single channel suitable means as necessary.
 82. Vertical discharge to be fixed with horizontally fixed, single channel suitable means as necessary.
 83. Horizontal discharge to be fixed with horizontally fixed, single channel suitable means as necessary.
 84. Vertical discharge to be fixed with horizontally fixed, single channel suitable means as necessary.
 85. Horizontal discharge to be fixed with horizontally fixed, single channel suitable means as necessary.
 86. Vertical discharge to be fixed with horizontally fixed, single channel suitable means as necessary.
 87. Horizontal discharge to be fixed with horizontally fixed, single channel suitable means as necessary.
 88. Vertical discharge to be fixed with horizontally fixed, single channel suitable means as necessary.
 89. Horizontal discharge to be fixed with horizontally fixed, single channel suitable means as necessary.
 90. Vertical discharge to be fixed with horizontally fixed, single channel suitable means as necessary.
 91. Horizontal discharge to be fixed with horizontally fixed, single channel suitable means as necessary.
 92. Vertical discharge to be fixed with horizontally fixed, single channel suitable means as necessary.
 93. Horizontal discharge to be fixed with horizontally fixed, single channel suitable means as necessary.
 94. Vertical discharge to be fixed with horizontally fixed, single channel suitable means as necessary.
 95. Horizontal discharge to be fixed with horizontally fixed, single channel suitable means as necessary.
 96. Vertical discharge to be fixed with horizontally fixed, single channel suitable means as necessary.
 97. Horizontal discharge to be fixed with horizontally fixed, single channel suitable means as necessary.
 98. Vertical discharge to be fixed with horizontally fixed, single channel suitable means as necessary.
 99. Horizontal discharge to be fixed with horizontally fixed, single channel suitable means as necessary.
 100. Vertical discharge to be fixed with horizontally fixed, single channel suitable means as necessary.



- GENERAL NOTES**
1. WORK TO BE COMPLETED WITHIN THE SPECIFIED TIME FRAME AND IN ACCORDANCE WITH THE BUILDING REGULATIONS AND ALL APPLICABLE STANDARDS.
 2. ALL DIMENSIONS ARE IN MILLIMETRES UNLESS OTHERWISE STATED.
 3. ALL VERTICAL DIMENSIONS ARE TO THE FINISH LEVEL UNLESS OTHERWISE STATED.
 4. THE DRAWING SHOULD BE READ IN CONJUNCTION WITH THE GENERAL NOTES.
 5. WORKS TO BE CARRIED OUT WITH MATERIALS AND WORKMANSHIP IN ACCORDANCE WITH THE BUILDING REGULATIONS AND ALL APPLICABLE STANDARDS.
 6. WORKS TO BE CARRIED OUT IN A SAFE MANNER IN ACCORDANCE WITH THE BUILDING REGULATIONS AND ALL APPLICABLE STANDARDS.
 7. OPEN UP EXISTING STRUCTURE AS REQUIRED BY THE BUILDING REGULATIONS AND ALL APPLICABLE STANDARDS.
 8. THIRD PARTY SUPPLIER TO MEASURE ON SITE BEFORE COMMENCEMENT OF EACH PORTION OF THE WORK.
 9. GENERAL CONTRACTOR TO VERIFY FIELD CONDITIONS PRIOR TO COMMENCEMENT OF EACH PORTION OF THE WORK.
 10. ALL DIMENSIONS IN DRAWINGS SHOULD BE NOTIFIED PRIOR TO COMMENCEMENT OF ANY WORKS.
 11. UNLESS OTHERWISE INDICATED, PLAN DIMENSIONS ARE TO COLUMN CENTRES, NORMAL SURFACE OF ANCHORAGE FACE OF STUDS AND FACE OF CONCRETE WALLS AND BEAM CENTRE TO CENTRES.
 12. FLOOR LINE REFERS TO TOP OF CONCRETE SLABS. FINISH FLOORING IS INSTALLED ABOVE THE FLOOR LINE. FOR EXPRESSED FLOORS AND CURBS, SEE STRUCTURAL DRAWINGS.
 13. REPERITIVE FEATURES ARE NOT DRAWN IN THEIR ENTIRETY AND SHALL BE COMPLETELY PROVIDED AS SHOWN IN FULL.
 14. WHERE A DOOR IS LOCATED NEAR CORNER OF ROOM AND IS NOT LOCATED BY DIMENSION PLAN OR DETAILS, DIMENSION SHALL BE TAKEN FROM FACE OF STUD WALL.
 15. LINE OF EXISTING FLOOR SLABS IS SHOWN ON THE BUILDING ELEVATIONS AND SECTIONS ARE APPROXIMATE.
 16. FLOOR LEVELS AND BOUNDARIES ASSUMED WHERE NOTED, IDENTIFIED BY THE DASH LINE.
 17. REFER TO ARCHITECTURAL, STRUCTURAL, MECHANICAL, ELECTRICAL, GENERAL SPECIFICATION AND OTHER CATEGORIES OR DRAWINGS FOR ADDITIONAL NOTES.
 18. VERIFY JOBS LOCATION PRIOR TO STARTING WORK AND PROVIDE COMPLETE AND REQUIRED OPENINGS THROUGH FLOORS AND WALLS. ACCESS DOORS, FURNISH CURBS, ARCHWAYS & SILLIES.
 19. CONTRACTOR TO CARRY OUT MOST LOGICAL SOLUTION BUT TO CHECK WITH ARCHITECT ON ENGINEER'S REQUESTS BY CLIENTS THAT DERIVE FROM DESIGN VISION THE DESIGN LIABILITY.
 20. SEE STRUCTURAL GENERAL NOTES AND PLANS TO COMPLEMENT ARCHITECTURAL PLANS AT ALL TIMES SO THAT ALL ASSUMPTIONS ARE MET.



Blanch - Design & Build - 31 Ribchester Ave, Perivale, Middlesex, London UB8 3TG
 0181 608 0000
 www.bischell.co.uk

31 Ribchester Ave, Perivale, Greenford UB8 3TG

PROPOSED ELEVATION

Building Regs		Drawn by	HC
1:50	21, 10, 16		
000-R0			

MATERIAL AND FINISHES

- 1 Cycle storage (2 bicycles)
- 2 Refuse I Recycle bins storage (Timber cladding)
- 3 New gate
- 4 Grass railina
- 5 Proposed window, aluminum framed with restrictor at 100 mm.
- 6 Proposed openable, aluminum framed roof-lights.

- 7 Proposed fixed, aluminum framed roof-lights.
- 8 Existing Brickwork
- 9 Proposed Brickwork
- 10 Grass cells paver
- 11 Insulated corrugated metal roof
- 12 Proposed Recessed brickwork
- 13 Existing boundary wall
- 14 New dark timber boundary wall
- 15 Outdoor timber flooring
- 16 Proposed fixed window, clear double glazed, aluminum framed.
- 17 Proposed door, clear double glazed, aluminum framed.
- 18 Proposed openable window, clear double glazed, aluminum framed.
- 19 Proposed bi-folding door, clear double glazed, aluminum framed.
- 20 Proposed patio door, obscured double glazed, aluminum framed.
- 21 Proposed entrance door
- 22 Proposed openable window, obscured double glazed, aluminum framed.
- 23 White render

- FLAT A : 101 sq. m (3 bed 5 person)**
FLAT B : 75 sq. m (2 bed 4 person)
FLAT C : 99 sq. m (2 bed 4 person)

- Onsite amenity space:**
Flat A (A + B) = 58.5sq. m (11.5 + 47 sq. m)
Flat B (C + D + E) = 51.3sq. m (19 + 27+ 4.3 sq. m)
Flat C (F + G) = 55.5sq. m (14 + 42.5 sq. m)

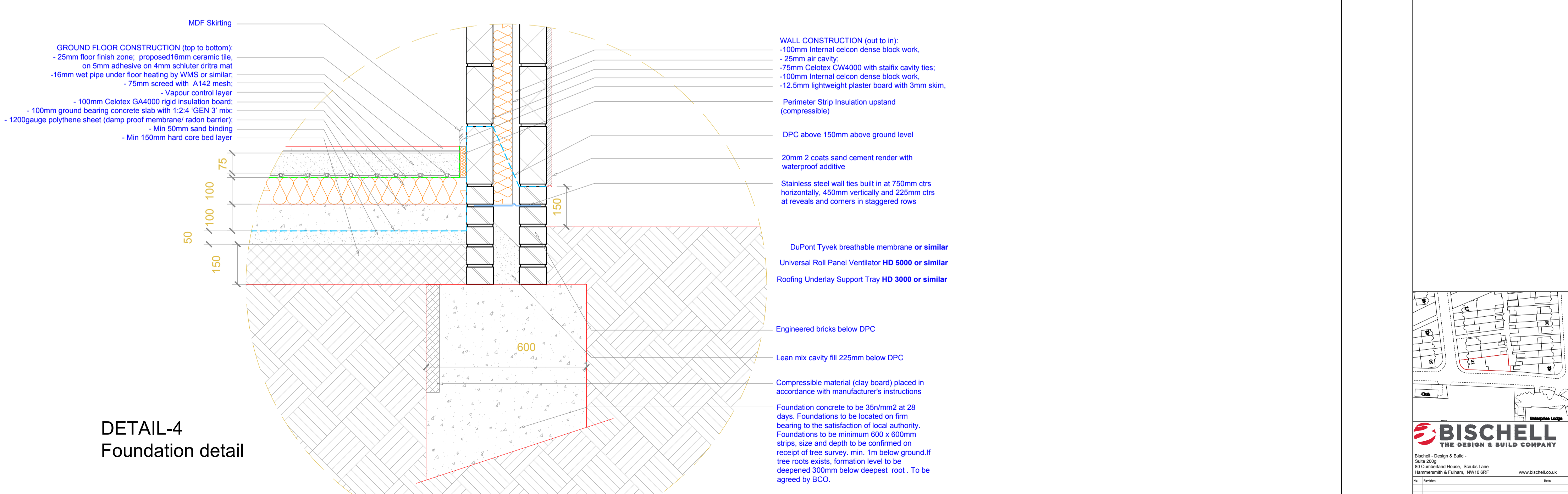
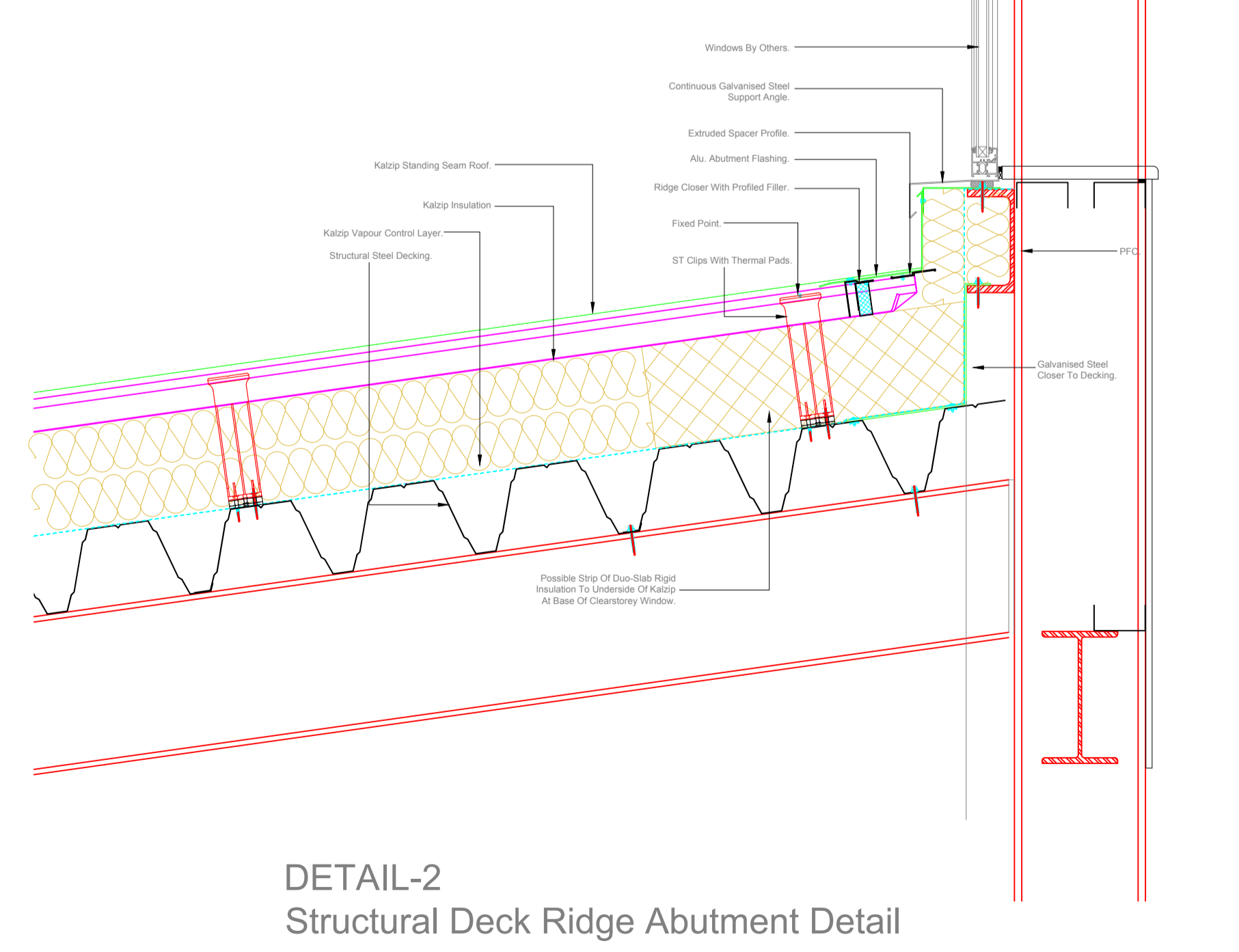
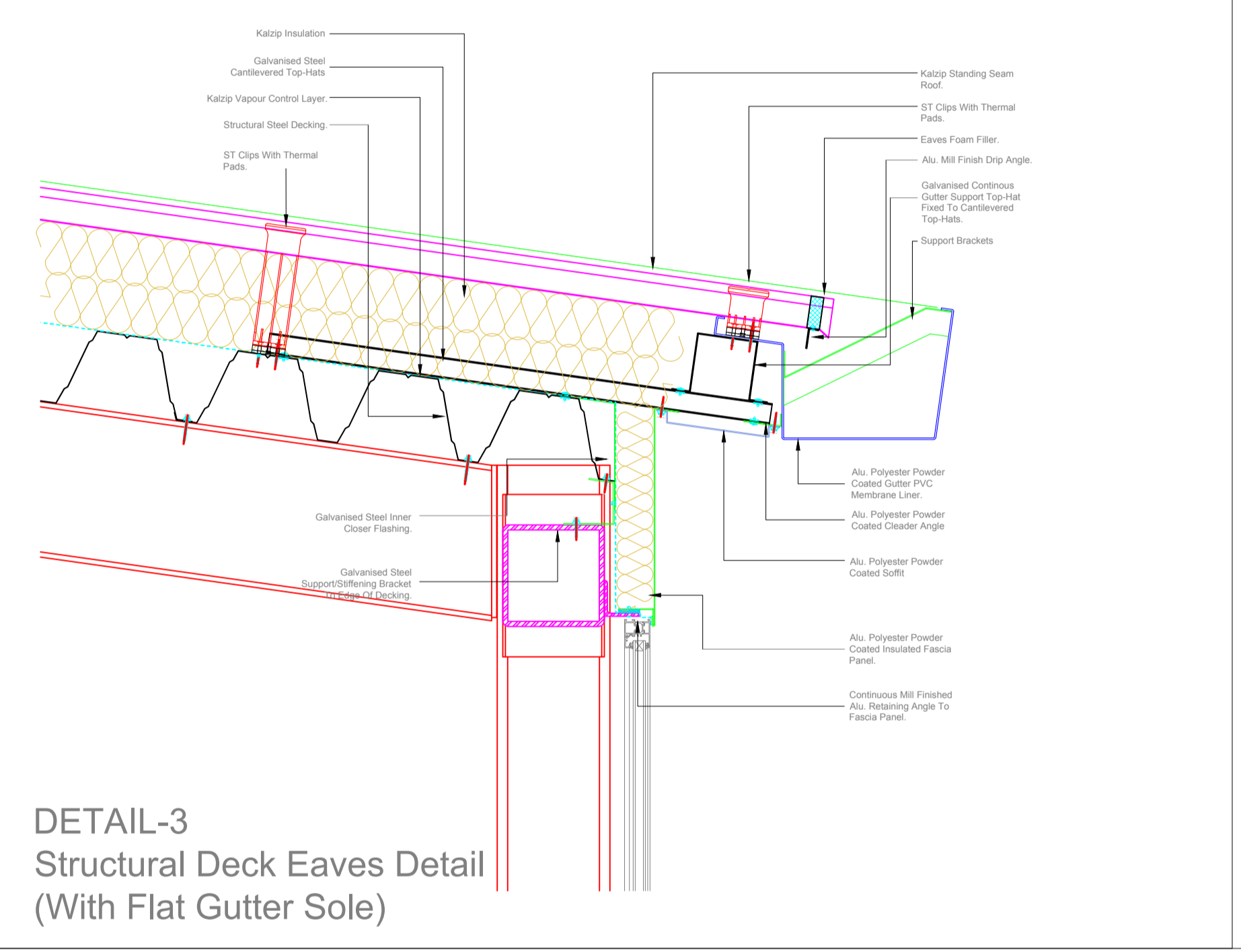
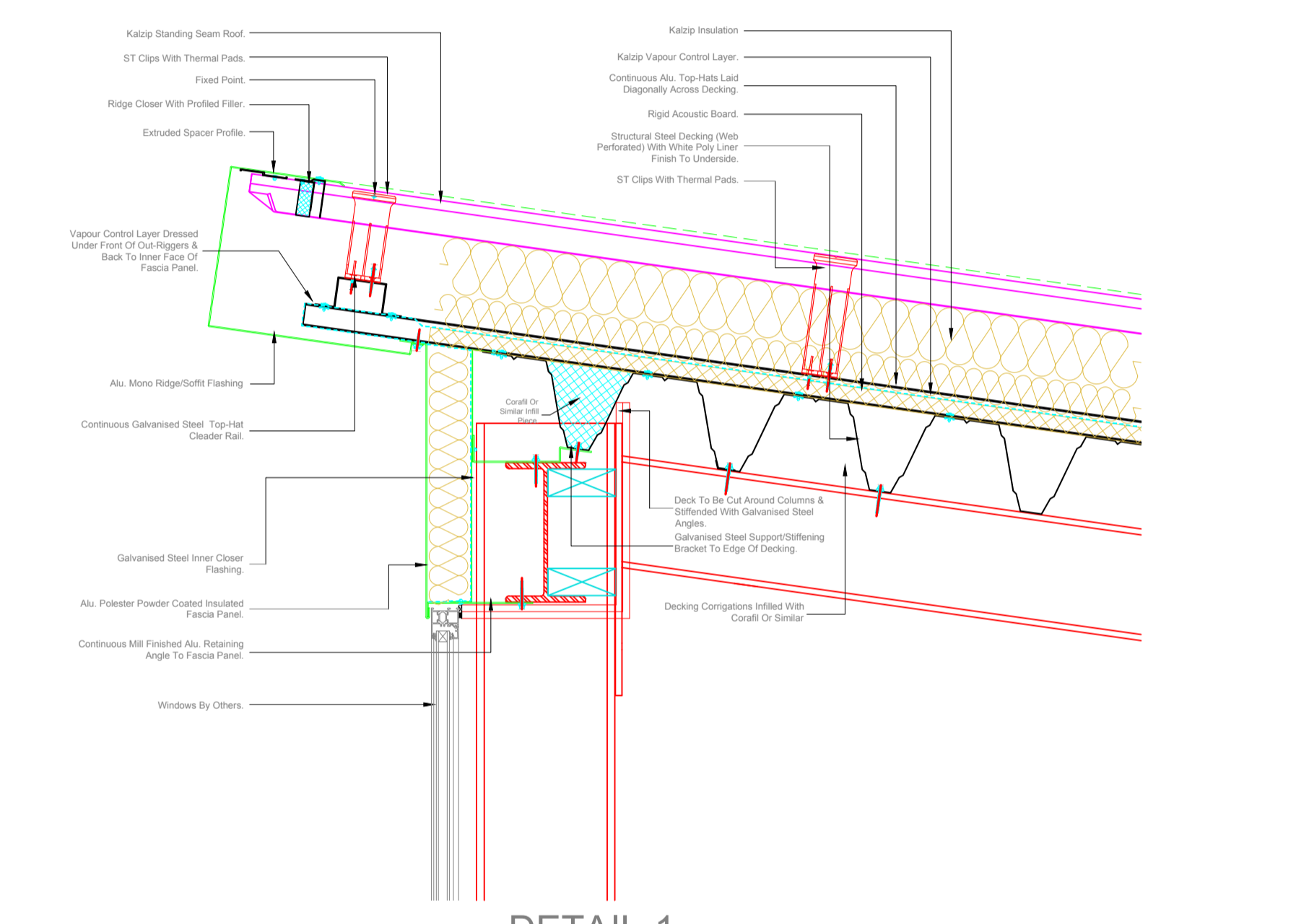
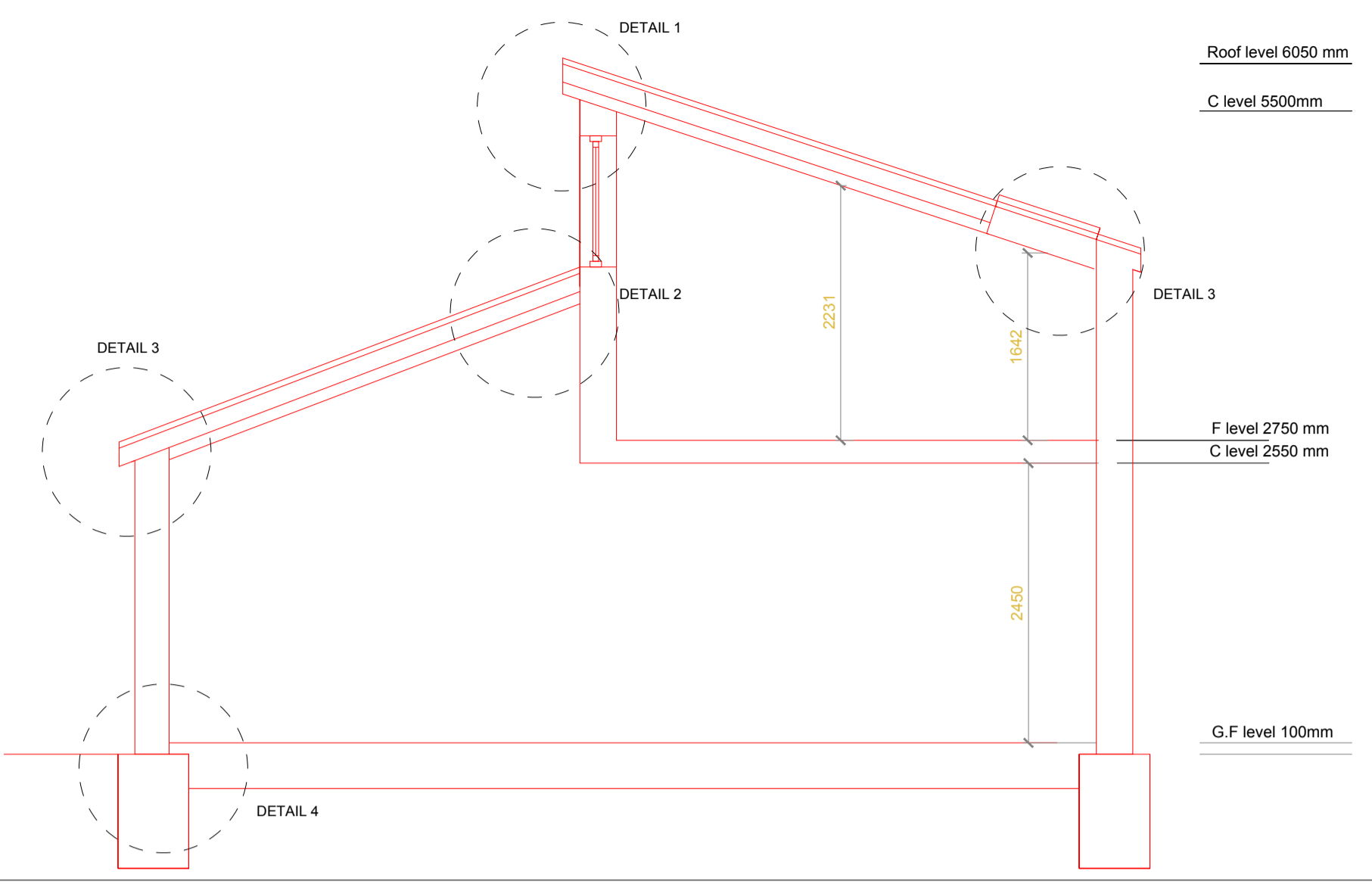
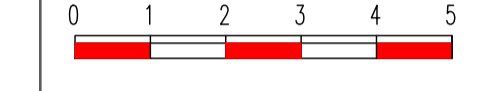
- Parking (Grass cells paver)**
FLAT A = 24 sq. m (2 Spaces)

- GENERAL NOTES**
1. Work to be completed within the specified time frame and in accordance with the Building Regulations and all applicable standards.
 2. All dimensions are in millimetres unless otherwise stated.
 3. All vertical dimensions are to the finish level unless otherwise stated.
 4. The drawing should be read in conjunction with the general notes.
 5. Works to be carried out with materials and workmanship in accordance with the Building Regulations and all applicable standards.
 6. Works to be carried out in a safe manner in accordance with the Building Regulations and all applicable standards.
 7. Open up existing structure as required by the Building Regulations and all applicable standards.
 8. Third party supplier to measure on site before commencement of each portion of the work.
 9. General contractor to verify field conditions prior to commencement of each portion of the work.
 10. All dimensions in drawings should be notified prior to commencement of any works.
 11. Unless otherwise indicated, plan dimensions are to column centres, normal surface of anchorage face of studs and face of concrete walls and beam centre to centres.
 12. Floor line refers to top of concrete slabs. Finish flooring is installed above the floor line. For expressed floors and curbs, see structural drawings.
 13. Repetitive features are not drawn in their entirety and shall be completely provided as shown in full.
 14. Where a door is located near corner of room and is not located by dimension plan or details, dimension shall be taken from face of stud wall.
 15. Line of existing floor slabs is shown on the building elevations and sections are approximate.
 16. Floor levels and boundaries assumed where noted, identified by the dash line.
 17. Refer to architectural, structural, mechanical, electrical, general specification and other categories or drawings for additional notes.
 18. Verify jobs location prior to starting work and provide complete and required openings through floors and walls. Access doors, furnish curbs, archways & sills.
 19. Contractor to carry out most logical solution but to check with architect on engineer's requests by clients that derive from design vision the design liability.
 20. See structural general notes and plans to complement architectural plans at all times so that all assumptions are met.

21. Foundations to be situated centrally under walls, minimum thickness 100mm, consisting of cement to BS1217/10% aggregate to BS 682 / 10% coarse CD (P or BS 5328 10/1) 1:2.4 mix or equal. 100 subject to approval by building in section and approval 1500 on deep excavated holes subject to approved competent person.
22. Foundations to be designed, installed, tested & certified by registered competent person.
23. Structural work of concrete to meet BS8113 (part 1) & BS8113 (part 2).
24. Structural work of masonry to meet BS5628 (part 1).
25. Structural work of steel to meet BS5950 (part 1).
26. Fixings of all cladding and roofing to comply with Building Regulations, separating walls to comply with BS5410 and BS5411.
27. All masonry and brickwork to be properly bonded and constructed of clay brick BS6071/10% concrete blocks to meet BS5607 (part 1) & BS5607 (part 2).
28. All brick and block work to be properly bonded and constructed of clay brick BS6071/10% concrete blocks to meet BS5607 (part 1) & BS5607 (part 2).
29. All masonry and brickwork to be properly bonded and constructed of clay brick BS6071/10% concrete blocks to meet BS5607 (part 1) & BS5607 (part 2).
30. All masonry and brickwork to be properly bonded and constructed of clay brick BS6071/10% concrete blocks to meet BS5607 (part 1) & BS5607 (part 2).
31. All masonry and brickwork to be properly bonded and constructed of clay brick BS6071/10% concrete blocks to meet BS5607 (part 1) & BS5607 (part 2).
32. All masonry and brickwork to be properly bonded and constructed of clay brick BS6071/10% concrete blocks to meet BS5607 (part 1) & BS5607 (part 2).
33. All masonry and brickwork to be properly bonded and constructed of clay brick BS6071/10% concrete blocks to meet BS5607 (part 1) & BS5607 (part 2).
34. All masonry and brickwork to be properly bonded and constructed of clay brick BS6071/10% concrete blocks to meet BS5607 (part 1) & BS5607 (part 2).
35. All masonry and brickwork to be properly bonded and constructed of clay brick BS6071/10% concrete blocks to meet BS5607 (part 1) & BS5607 (part 2).
36. Discharge drains to be worked and fixed with durable pipes minimum 100 mm above openings. 50 mm horizontally, include suitable means as necessary.
37. Repetitive features are not drawn in their entirety and shall be completely provided as shown in full.
38. Repetitive features are not drawn in their entirety and shall be completely provided as shown in full.
39. Repetitive features are not drawn in their entirety and shall be completely provided as shown in full.
40. Repetitive features are not drawn in their entirety and shall be completely provided as shown in full.
41. Repetitive features are not drawn in their entirety and shall be completely provided as shown in full.
42. Gas bottles SECOPAC not less than 75% to be designed, fixed, tested & certified by gas safe registered person. Include programme, maximum capacity and manufacturer's name for new installations.
43. Maximum size of window, door & roof light openings in walling to be 20% of floor area. Include frame work and low-E coating to new 50mm sign fixed double glazed windows & doors.
44. Safety glazing to comply with BS6262 (part 1) & BS6262 (part 2).
45. Glass located within 300 mm of construction, as shown. Foundations to be in accordance with BS6180 Part 4: 4.2.
46. Glass located within 300 mm of construction, as shown. Foundations to be in accordance with BS6180 Part 4: 4.2.
47. Repetitive features are not drawn in their entirety and shall be completely provided as shown in full.
48. Repetitive features are not drawn in their entirety and shall be completely provided as shown in full.
49. Repetitive features are not drawn in their entirety and shall be completely provided as shown in full.
50. Repetitive features are not drawn in their entirety and shall be completely provided as shown in full.
51. Repetitive features are not drawn in their entirety and shall be completely provided as shown in full.
52. Repetitive features are not drawn in their entirety and shall be completely provided as shown in full.
53. Repetitive features are not drawn in their entirety and shall be completely provided as shown in full.
54. Repetitive features are not drawn in their entirety and shall be completely provided as shown in full.
55. Repetitive features are not drawn in their entirety and shall be completely provided as shown in full.
56. Repetitive features are not drawn in their entirety and shall be completely provided as shown in full.
57. Repetitive features are not drawn in their entirety and shall be completely provided as shown in full.
58. Repetitive features are not drawn in their entirety and shall be completely provided as shown in full.
59. Repetitive features are not drawn in their entirety and shall be completely provided as shown in full.
60. Repetitive features are not drawn in their entirety and shall be completely provided as shown in full.
61. Repetitive features are not drawn in their entirety and shall be completely provided as shown in full.
62. Repetitive features are not drawn in their entirety and shall be completely provided as shown in full.
63. Repetitive features are not drawn in their entirety and shall be completely provided as shown in full.
64. Repetitive features are not drawn in their entirety and shall be completely provided as shown in full.
65. Repetitive features are not drawn in their entirety and shall be completely provided as shown in full.
66. Repetitive features are not drawn in their entirety and shall be completely provided as shown in full.
67. Repetitive features are not drawn in their entirety and shall be completely provided as shown in full.
68. Repetitive features are not drawn in their entirety and shall be completely provided as shown in full.
69. Repetitive features are not drawn in their entirety and shall be completely provided as shown in full.
70. Repetitive features are not drawn in their entirety and shall be completely provided as shown in full.
71. Repetitive features are not drawn in their entirety and shall be completely provided as shown in full.
72. Repetitive features are not drawn in their entirety and shall be completely provided as shown in full.
73. Repetitive features are not drawn in their entirety and shall be completely provided as shown in full.
74. Repetitive features are not drawn in their entirety and shall be completely provided as shown in full.
75. Repetitive features are not drawn in their entirety and shall be completely provided as shown in full.
76. Repetitive features are not drawn in their entirety and shall be completely provided as shown in full.
77. Repetitive features are not drawn in their entirety and shall be completely provided as shown in full.
78. Repetitive features are not drawn in their entirety and shall be completely provided as shown in full.
79. Repetitive features are not drawn in their entirety and shall be completely provided as shown in full.
80. Repetitive features are not drawn in their entirety and shall be completely provided as shown in full.
81. Repetitive features are not drawn in their entirety and shall be completely provided as shown in full.
82. Repetitive features are not drawn in their entirety and shall be completely provided as shown in full.
83. Repetitive features are not drawn in their entirety and shall be completely provided as shown in full.
84. Repetitive features are not drawn in their entirety and shall be completely provided as shown in full.
85. Repetitive features are not drawn in their entirety and shall be completely provided as shown in full.
86. Repetitive features are not drawn in their entirety and shall be completely provided as shown in full.
87. Repetitive features are not drawn in their entirety and shall be completely provided as shown in full.
88. Repetitive features are not drawn in their entirety and shall be completely provided as shown in full.
89. Repetitive features are not drawn in their entirety and shall be completely provided as shown in full.
90. Repetitive features are not drawn in their entirety and shall be completely provided as shown in full.
91. Repetitive features are not drawn in their entirety and shall be completely provided as shown in full.
92. Repetitive features are not drawn in their entirety and shall be completely provided as shown in full.
93. Repetitive features are not drawn in their entirety and shall be completely provided as shown in full.
94. Repetitive features are not drawn in their entirety and shall be completely provided as shown in full.
95. Repetitive features are not drawn in their entirety and shall be completely provided as shown in full.
96. Repetitive features are not drawn in their entirety and shall be completely provided as shown in full.
97. Repetitive features are not drawn in their entirety and shall be completely provided as shown in full.
98. Repetitive features are not drawn in their entirety and shall be completely provided as shown in full.
99. Repetitive features are not drawn in their entirety and shall be completely provided as shown in full.
100. Repetitive features are not drawn in their entirety and shall be completely provided as shown in full.

GENERAL NOTES

1. CHECK ALL DIMENSIONS ON SITE.
2. ALL DIMENSIONS ARE IN MILLIMETRES UNLESS OTHERWISE STATED.
3. ALL VERTICAL MEASUREMENTS ASSUME GROUND TO BE LEVEL UNLESS OTHERWISE STATED.
4. THIS DRAWING SHOULD BE READ IN CONJUNCTION WITH THE GENERAL NOTES.
5. WORK IS TO BE CARRIED OUT WITH MATERIALS AND WORKMANSHIP IN ACCORDANCE WITH APPROVED DOCUMENT FOR REGULATION 118 OF THE BUILDING REGULATIONS 2010.
6. WORK IS TO BE CARRIED OUT IN A SAFE MANNER IN ACCORDANCE WITH THE BUILDING REGULATIONS 2010.
7. CHECK EXISTING STRUCTURE AS REQUIRED BY THE BUILDING INSPECTOR.
8. CHECK EXISTING SUPPLIER TO MEASURE ON SITE BEFORE MANUFACTURING.
9. GENERAL CONTRACTOR TO VERIFY FIELD CONDITIONS PRIOR TO COMMENCEMENT OF EACH PORTION OF THE WORK.
10. ANY DISCREPANCIES IN DRAWINGS SHOULD BE NOTIFIED PRIOR TO COMMENCEMENT OF WORK.
11. UNLESS OTHERWISE INDICATED, PLAN DIMENSIONS ARE TO COLUMN CENTRE UNLESS OTHERWISE INDICATED. SURFACE OF MASONRY FACE OF STUDS AND FACE OF CONCRETE WALLS AND BEAM CENTRE TO CENTRE.
12. FLOOR LINE REFERS TO TOP OF CONCRETE SLAB FINISH FLOORING IS INSTALLED ABOVE THE FLOOR LINE. FOR DEEPER FLOORS AND CURBS, SEE STRUCTURAL DRAWINGS.
13. REPERFECT FEATURES ARE NOT ALWAYS DRAWN IN THEIR ENTIRETY AND SHALL BE COMPLETED PROVIDED AS DRAWN IN FULL.
14. WHERE A DOOR IS LOCATED NEAR CORNER OF ROOM AND IS NOT LOCATED BY DIMENSION ON PLAN OR DETAILS, DIMENSION SHALL BE 100MM FROM FACE OF STUD (WALL).
15. LINE OF EXISTING FLOOR SLABS AS SHOWN ON THE BUILDING RELATIONS AND SECTIONS ARE APPROXIMATE.
16. FLOOR LEVELS AND BOUNDARIES ASSUMED WHERE NOTED, IDENTIFIED BY LINE DRAWINGS.
17. REFER TO ARCHITECTURAL, STRUCTURAL, MECHANICAL, ELECTRICAL, GENERAL SPECIFICATION AND OTHER CATEGORIES OR DRAWINGS FOR ADDITIONAL NOTES.
18. VERIFY SIZE/LOCATION/FINISH/RATING, ETC. AND PROVIDE COMPLETE AND REQUIRED OPENINGS THROUGH FLOORS AND WALLS. ACCESS DOORS, FURNISH, CURBS, ANCHORS & ISERS.
19. CONTRACTOR TO CARRY OUT MOST LOGICAL SOLUTION BUT TO CHECK WITH ARCHITECT ON ENTRIES OF ENGINEER, REQUEST BY CLIENT THAT DEVELOPS FORM DESIGN FOR THE DESIGN LIABILITY.
20. SEE STRUCTURAL GENERAL NOTES AND PLANS TO COMPLEMENT ARCHITECTURAL PLANS AT ALL TIMES. DO NOT ASSUME ANYTHING.



BISCHELL
THE DESIGN & BUILD COMPANY

31 Ribchester Ave, Perivale, Greenford UB6 8TG

DETAIL

Building Regs

Scale: 1:50 BA1 Date: 21.10.16 Sheet: 1 of 1

011-RD